

ADDENDUM

ZEC DELIMITATION AUDIT REPORT
PAGE BY PAGE
ERRORS AND ANOMALIES

TEAM PACHEDU

JAN 2023

INTRODUCTION

This is a supplement to the earlier abridged audit of ZEC's 2022-23 delimitation report. The focus of the abridged report was to outline the major findings in a concise manner and as a result, the full extent of the errors and anomalies was not outlined. This addendum bridges that gap by detailing the major delimitation shortfalls. These are presented page-by-page for all pages that had non-negligible discrepancies.

Out of the 509 pages, we found more than a thousand errors and anomalies on 321 pages of the report and this translates to 63.1% of ZEC's report. The issues covered include, but are not limited to ward/constituency voter population discrepancies, polling station discrepancies as well as under/oversized wards. Owing to the fact that ZEC kept the voters roll secret to avoid professional scrutiny, the population discrepancies were only determined from the inconsistent voter totals that were presented in the ZEC delimitation report. With regards to polling station discrepancies, several aspects were covered from invalid polling station codes to duplicate polling stations, non-standard polling station numbering, district and local authority irregularities on polling station codes, as well as polling stations that had been assigned to different wards. Other discrepancies such as over-sized and under-sized wards were explored, and are hereinafter referred to as illegal wards. For the latter, only the Zimbabwe Electoral Commission's flawed method of calculating ward population thresholds was used.

Despite the detail, the results presented herein are still not exhaustive as we took a minimalistic approach in reporting technical aspects such as the evaluation of maps as well as gerrymandering, both of which are explored in detail in the unabridged technical report. Further, given the limitations in the data which ZEC provided, the analysis of the movements of voters at polling station level was not carried out and not reported. We were, however, able to detect dozens of cases involving the unjustified and prejudicial mass movement of voters by ZEC, but the full scale of the impact will only be established and reported if and only if the delimitation voters roll is availed.

Be that as it may, the audit extensively reviewed all the available official data in ZEC's preliminary delimitation report. Limited reference to other secondary sources was done beyond the legal and operational benchmarks set forth in the Constitution, Electoral Act, ZEC Regulations, statutory instruments as well as standard operating procedures.

Voter Population Discrepancy: While we concur that the voters roll for the delimitation closed on 30 May 2022, ZEC is however untruthful that as at 30 May 2022, Zimbabwe had 5,804,376 registered voters. Based on our tracking of registration numbers, 5,804,376 is inconsistent with the registrations at the time. A case in point, on 10 May, the *official* voter population for Midlands was 764,161, but from the alleged 30 May population of 762,928 published in the delimitation report, Midlands had lost 1,133 voters in spite of the blitz and post-blitz registration surge. Four other provinces also had fewer voters on 30 May than there were on 10 May, that is, Matabeleland North, Mashonaland East, Manicaland and Mashonaland West. Such a huge drop in the voter population over 20 days is anomalous. The most feasible explanation for this reduction is the mass removal of voters; the focal case being General Notice 1197 of 2022.

On 31 May, ZEC gazetted the intention to remove 32,010 presumed deceased voters in the General Notice 1197 of 2022, one day after the delimitation voters roll closed. The standard practice is that the notice does not automatically result in the deletion of records. Section 33(4) of the Electoral Act states that “A voter registration officer **SHALL NOT REMOVE** the name of a voter unless he or she **published his or her intention** to do so in a newspaper circulating in the area of the voter’s last known address and has sent to the voter’s last known address a written notice of objection addressed to the voter, to which a form of notice of appeal has been annexed.” The General Notice 1197 of 2022 did exactly that. It was an “intention to remove” notification and gave a 7-day ultimatum for any objections. So, there is no way the records could have been deleted prior to the end of the 7-day ultimatum after the gazetting, that is, before 6 June. Now, on page ix, ZEC claims that as at 30 May 2022, there were 5,804,376 registered voters, which is incorrect because the deletions from the roll could only have been done after gazetting - after 31 May, not before.

ZEC is not being honest. ZEC should publish the number of voters as they were on 30 May, then acknowledge that they eventually removed deceased voters afterwards. Otherwise, if ZEC insists, it simply means that ZEC violated the law by deleting voters prior to gazetting the intention to remove them.

Indefinite Census Population: ZEC used the preliminary National Population and Housing Census results, not the final. This means that the comparisons being made by ZEC relative to the adult census population are not conclusive.

Inconsistent Application of ZEC Rules: On this page, ZEC claims that a sliding rule was applied in which the minimum threshold was applied in sparsely populated areas and, while the upper threshold was used in densely populated areas. This not so correct. ZEC used a one-size-fits-all rule at provincial level instead of constituency level. There are less populated constituencies in Harare which have the same population density as some constituencies in other provinces, but their constituency population sizes are worlds apart. ZEC never safeguarded that the fairness of application of this sliding rule was maintained and that parity in constituencies was maintained based on population density as they claimed. Rather, even sparsely populated Harare constituencies were equally affected the same way as densely populated Harare constituencies. The provincial blanket application of this unconstitutionally-defined rule is what has resulted in the severe under-representation of voters in urban areas, particularly Harare. Effectively, the blanket rule used by ZEC is discriminatory and prejudicial as it does not safeguard the equality of the vote, but undermines the constitutional rights of urban voters to fair representation. ZEC must use the population density statistics for each and every constituency then apply the sliding rule at constituency level, not provincial level as they fraudulently did.

On this page, ZEC declares, *“In general, no voters were moved from their polling stations. Registered voters in each ward and constituency will vote at their usual polling stations.”* We have a huge problem with this. In our July 2018 audit and February 2022 audit, we exposed thousands of voters who had been assigned to vote in the wrong wards and constituencies, particularly in urban areas. We expected that ZEC would rectify this during the delimitation. While we may absolve ZEC for the initial displacement of voters in 2018 as mere ignorance, intentionally leaving these victims to continue voting for the wrong councillors and wrong MPs is illegal and intolerable. We were expecting ZEC to avail us with the delimitation voters roll so that we can have a definitive total of those affected, but ZEC kept this roll secret. However, we had carried out a countrywide list-to-people audit of VR anomalies between May and October 2022 and confirmed that while few voters had taken the prerogative upon themselves and rectified this by transferring. The majority of those affected had not recognized that they had been displaced with some even complaining about the polling station distance in oblivion to the fact that ZEC had allotted wrong wards and polling stations. Others were unaware that they had been voting in the wrong wards/constituencies, mainly in urban areas. ZEC must resolve this.

ZEC makes two mistakes when defining the structure of Polling Station codes.

The first is that ZEC erroneously identify the abbreviation on the polling station code as the district [7901VIC0104]. The abbreviation on the polling station code is in fact for the local authority, and not the district. A case in point is Hwange District (Code 79). This comprises of three local authorities: Hwange RDC (HWA), Hwange Local Board (HLB) and Victoria Falls Municipality (VIC). From the definition given by ZEC on this page, ZEC insinuates that all the polling stations from the three Local Authorities in Hwange District should have a similar abbreviation. The fact that there are three distinct abbreviations {HWA, HLB, VIC} each for the respective local authority confirms that ZEC is wrong. This is confirmed in all the other districts that have multiple local authorities.

The second slipup was the omission of the sub-polling station part when they defined the polling station code given that ZEC listed sub-polling stations.

Invalid Polling Station Code: 0801BYO00402

Invalid Polling Station Code: 0801BYO00403

Non-Standard Polling Station numbering: Ward 3

Invalid Polling Station Code: 0801BYO1

Invalid Polling Station Code: 801BYO0807

Invalid Polling Station Code: 0801BYO01102

Non-Standard Polling Station numbering: Ward 10

Non-Standard Polling Station numbering: Ward 12

Non-Standard Polling Station numbering: Ward 14

Invalid Polling Station Code: 0801BYO01901
Invalid Polling Station Code: 0801BYO01902
Invalid Polling Station Code: 0801BYO01903
Invalid Polling Station Code: 0801BYO01904
Invalid Polling Station Code: 0801BYO01905
Invalid Polling Station Code: 0801BYO01906
Invalid Polling Station Code: 0801BYO01907
Invalid Polling Station Code: 0801BYO01908
Invalid Polling Station Code: 0801BYO01909
Invalid Polling Station Code: 0801BYO01910
Invalid Polling Station Code: 0801BYO203

Non-Standard Polling Station numbering: Ward 18
Non-Standard Polling Station numbering: Ward 21
Non-Standard Polling Station numbering: Ward 22
Non-Standard Polling Station numbering: Ward 24

Non-Standard Polling Station numbering: Ward 25
Non-Standard Polling Station numbering: Ward 26
Non-Standard Polling Station numbering: Ward 27
Non-Standard Polling Station numbering: Ward 28
Non-Standard Polling Station numbering: Ward 29

Voter Population Discrepancy: ZEC erroneously states the voter population for Chitungwiza Municipality as 1,546 when it is in fact 154,996.

Non-Standard Polling Station numbering: Ward 2
Non-Standard Polling Station numbering: Ward 4

Non-Standard Polling Station numbering: Ward 6
Non-Standard Polling Station numbering: Ward 8

Non-Standard Polling Station numbering: Ward 9
Non-Standard Polling Station numbering: Ward 11

Page 14

Non-Standard Polling Station numbering: Ward 14
Non-Standard Polling Station numbering: Ward 15
Non-Standard Polling Station numbering: Ward 17
Non-Standard Polling Station numbering: Ward 18
Non-Standard Polling Station numbering: Ward 19

Page 15

Non-Standard Polling Station numbering: Ward 21
Non-Standard Polling Station numbering: Ward 22
Non-Standard Polling Station numbering: Ward 23
Non-Standard Polling Station numbering: Ward 24
Non-Standard Polling Station numbering: Ward 25

Page 16

Map Boundary Discrepancy: Epworth Local Board was previously classified under Harare electoral District. However, the new delimitation map demarcates Epworth as a stand-alone electoral district. We have not found any Government Gazette to this effect. ZEC also did not provide district-level breakdowns in the delimitation report to verify this. ZEC must clarify on this latest development.

Excessive Movements: Ward 1, an opposition stronghold, had the highest number of voters in Epworth, but ZEC has removed four times more than what they were supposed to remove thereby partially splitting the ward between Epworth North and South. This borders on gerrymandering given the fact that the other opposition stronghold Ward 6 (now 7), also in Epworth North, has been needlessly expanded into Ward 4. *These unjustified changes, including for other wards/constituencies elsewhere are detailed in the technical report.*

Page 17

Non-Standard Polling Station numbering: Ward 6
Non-Standard Polling Station numbering: Ward 7

Ward Size Anomaly: Despite the population of Harare having increased by 129,221 voters since 2008, it is illogical that ZEC had the audacity to reduce the number of wards from the 46 that were assigned in 2008 down to 45 instead of increasing the number of wards to accommodate the rise in the number of voters. Harare City Council requested 55 wards to cater for the increase in population, but ZEC refused. This not only violates the principle of equality of vote enshrined in the Constitution of Zimbabwe, but also violates the right of urban voters to fair representation as also prescribed by the Constitution of Zimbabwe. This is a clear example of how biased ZEC is against urban voters.

Non-Standard Polling Station numbering: Ward 1

Non-Standard Polling Station numbering: Ward 2
Non-Standard Polling Station numbering: Ward 3
Non-Standard Polling Station numbering: Ward 4
Non-Standard Polling Station numbering: Ward 5
Non-Standard Polling Station numbering: Ward 6

Wrong District Code: 301HRE0615

Non-Standard Polling Station numbering: Ward 7
Non-Standard Polling Station numbering: Ward 8
Non-Standard Polling Station numbering: Ward 9
Non-Standard Polling Station numbering: Ward 10
Non-Standard Polling Station numbering: Ward 11

Non-Standard Polling Station numbering: Ward 12

Non-Standard Polling Station numbering: Ward 13

Non-Standard Polling Station numbering: Ward 14

Non-Standard Polling Station numbering: Ward 15

Non-Standard Polling Station numbering: Ward 16

Page 23

Non-Standard Polling Station numbering: Ward 17

Non-Standard Polling Station numbering: Ward 18

Non-Standard Polling Station numbering: Ward 19

Non-Standard Polling Station numbering: Ward 20

Non-Standard Polling Station numbering: Ward 21

Page 24

Duplicate Polling Station: 6301HRE2503

Duplicate Polling Station: 6301HRE2504

Non-Standard Polling Station numbering: Ward 22

Non-Standard Polling Station numbering: Ward 23

Non-Standard Polling Station numbering: Ward 24

Non-Standard Polling Station numbering: Ward 25

Non-Standard Polling Station numbering: Ward 26

Page 25

Duplicate Polling Station: 6301HRE2801

Non-Standard Polling Station numbering: Ward 27

Non-Standard Polling Station numbering: Ward 28

Non-Standard Polling Station numbering: Ward 29

Non-Standard Polling Station numbering: Ward 30

Non-Standard Polling Station numbering: Ward 31

Page 26

Duplicate Polling Station: 6301HRE3205

Non-Standard Polling Station numbering: Ward 32
Non-Standard Polling Station numbering: Ward 33
Non-Standard Polling Station numbering: Ward 34
Non-Standard Polling Station numbering: Ward 35
Non-Standard Polling Station numbering: Ward 36

Page 27

Duplicate Polling Station: 6301HRE3605

Non-Standard Polling Station numbering: Ward 37
Non-Standard Polling Station numbering: Ward 38
Non-Standard Polling Station numbering: Ward 39
Non-Standard Polling Station numbering: Ward 40
Non-Standard Polling Station numbering: Ward 41

Page 28

Duplicate Polling Station: 6301HRE4401

Non-Standard Polling Station numbering: Ward 42
Non-Standard Polling Station numbering: Ward 43
Non-Standard Polling Station numbering: Ward 44
Non-Standard Polling Station numbering: Ward 45

Page 30

Voter Population Discrepancy: On the National Assembly constituency list for Harare Province, ZEC states that the total voter population for Zengeza West constituency is 31,699 voters. However, from page 37 of the report, ZEC states the voter population as being 31,669, which is now different.

Page 37

Voter Population Discrepancy: For Zengeza West constituency, in-text, ZEC indicates that there are 31,699 voters, but in the table, they specify a total of 31,669. However, the summation of the individual wards gives 31,699.

Page 39

Non-Standard Polling Station numbering: Ward 1

Page 43

Invalid Polling Station Code: 0700BUH290

Page 45

Non-Standard Polling Station numbering: Ward 1

Non-Standard Polling Station numbering: Ward 7

Non-Standard Polling Station numbering: Ward 8

Page 46

Non-Standard Polling Station numbering: Ward 12

Non-Standard Polling Station numbering: Ward 13

Non-Standard Polling Station numbering: Ward 16

Non-Standard Polling Station numbering: Ward 17

Non-Standard Polling Station numbering: Ward 18

Page 47

Non-Standard Polling Station numbering: Ward 19

Non-Standard Polling Station numbering: Ward 20

Non-Standard Polling Station numbering: Ward 22

Page 49

Invalid Polling Station Code: 1300CPG103B

Page 50

Incorrect Local Authority Code: 1300CPGP0701

Incorrect Local Authority Code: 1300CPGP0702
Incorrect Local Authority Code: 1300CPGP0703
Incorrect Local Authority Code: 1300CPGP0704

Page 51

Duplicate Polling Station: 1300CPG1706

Non-Standard Polling Station numbering: Ward 17
Non-Standard Polling Station numbering: Ward 20

Page 52

Invalid Polling Station Code: 1300CPG25B
Invalid Polling Station Code: 1300CPG20801
Invalid Polling Station Code: 1300CPG20802
Invalid Polling Station Code: 1300CPG20803
Invalid Polling Station Code: 1300CPG20804
Invalid Polling Station Code: 1300CPG20805
Invalid Polling Station Code: 1300CPG20806

Alpha-Numerical Mix-up: 1300CPG27O4, should be 0 not O

Non-Standard Polling Station numbering: Ward 24

Page 55

Voter Population Discrepancy: For Makoni RDC Ward 20 in the table on this page, the voter population is 2,384, but for the same Ward 20 on page 89, the population is different at 2,284. This is a difference of 100 voters.

Illegal Wards: According to ZEC's calculations, the minimum ward size in Makoni RDC should be 2,123 and the maximum should be 3,185. However, some wards are outside this legally allowed population range. These are:

- Ward 8:** 3,232 voters and this is greater than the maximum 3,185
- Ward 12:** 3,274 voters and this is greater than the maximum 3,185
- Ward 13:** 3, 202 voters and this is greater than the maximum 3,185
- Ward 16:** 3,226 voters and this is greater than the maximum 3,185

Illegal Ward: Makoni RDC Ward 25 has 2,111 voters and is less than 2,123

Non-Standard Polling Station numbering: Ward 1

Non-Standard Polling Station numbering: Ward 2

Voter Population Discrepancy: The total Local Authority voter population might be wrong given the discrepancy in the discrepancy in Mutasa RDC Ward 20 population presented on page 55 and page 89 of the delimitation report.

Illegal Ward: Makoni Rural District Council Ward 8, above 20% threshold

Polling Station in Wrong Ward: 4200MKI0509 Ward 5 P/S in Ward 6

Polling Station in Wrong Ward: 4200MKI0902 Ward 9 P/S in Ward 10

Polling Station in Wrong Ward: 4200MKI1002 Ward 10 P/S in Ward 11

Polling Station in Wrong Ward: 4200MKI0801 Ward 8 P/S in Ward 11

Polling Station in Wrong Ward: 4200MKI0810 Ward 8 P/S in Ward 11

Polling Station in Wrong Ward: 4200MKI0811 Ward 8 P/S in Ward 11

Non-Standard Polling Station numbering: Ward 3

Non-Standard Polling Station numbering: Ward 4

Non-Standard Polling Station numbering: Ward 5

Non-Standard Polling Station numbering: Ward 6

Non-Standard Polling Station numbering: Ward 7

Non-Standard Polling Station numbering: Ward 8

Non-Standard Polling Station numbering: Ward 9

Non-Standard Polling Station numbering: Ward 10

Non-Standard Polling Station numbering: Ward 11

Illegal Ward: Makoni Rural District Council Ward 12, above 20% threshold

Illegal Ward: Makoni Rural District Council Ward 13, above 20% threshold

Illegal Ward: Makoni Rural District Council Ward 16, above 20% threshold

Duplicate Polling Station: 4200MKI1904 (Ward 19)

Non-Standard Polling Station numbering: Ward 12

Non-Standard Polling Station numbering: Ward 14

Non-Standard Polling Station numbering: Ward 15

Non-Standard Polling Station numbering: Ward 16

Non-Standard Polling Station numbering: Ward 17

Non-Standard Polling Station numbering: Ward 19

Page 59

Illegal Ward: Makoni Rural District Council Ward 25, below 20% threshold

Duplicate Polling Station: 4200MKI2106 (Ward 21)

Non-Standard Polling Station numbering: Ward 20

Non-Standard Polling Station numbering: Ward 21

Non-Standard Polling Station numbering: Ward 22

Non-Standard Polling Station numbering: Ward 23

Non-Standard Polling Station numbering: Ward 24

Non-Standard Polling Station numbering: Ward 25

Non-Standard Polling Station numbering: Ward 26

Non-Standard Polling Station numbering: Ward 27

Non-Standard Polling Station numbering: Ward 28

Page 60

Non-Standard Polling Station numbering: Ward 29

Non-Standard Polling Station numbering: Ward 30

Non-Standard Polling Station numbering: Ward 31

Non-Standard Polling Station numbering: Ward 33

Non-Standard Polling Station numbering: Ward 34

Non-Standard Polling Station numbering: Ward 35

Non-Standard Polling Station numbering: Ward 36

Non-Standard Polling Station numbering: Ward 37

Non-Standard Polling Station numbering: Ward 38

Page 61

Non-Standard Polling Station numbering: Ward 39

Page 62

Invalid Polling Station Code: 7501MUM00501

Fake District: 7401MUM0607

Fake District: 7401MUM0705

Fake District: 7401MUM0707

Non-Standard Polling Station numbering: Ward 2

Non-Standard Polling Station numbering: Ward 3

Non-Standard Polling Station numbering: Ward 5

Page 64

Non-Standard Polling Station numbering: Ward 9

Non-Standard Polling Station numbering: Ward 12

Page 65

Non-Standard Polling Station numbering: Ward 15

Non-Standard Polling Station numbering: Ward 16

Non-Standard Polling Station numbering: Ward 17

Non-Standard Polling Station numbering: Ward 18

Page 67

Polling Station in Wrong Ward: 7500MTR3405, Ward 34 P/S in Ward 4

Polling Station in Wrong Ward: 7500MTR3407, Ward 34 P/S in Ward 4

Polling Station in Wrong Ward: 7500MTR0301, Ward 3 P/S in Ward 5

Non-Standard Polling Station numbering: Ward 1

Non-Standard Polling Station numbering: Ward 2

Non-Standard Polling Station numbering: Ward 3

Non-Standard Polling Station numbering: Ward 4

Non-Standard Polling Station numbering: Ward 5

Page 68

Duplicate Polling Station: 7500MTR2002

Polling Station in Wrong Ward: 7500MTR1501, Ward 15 P/S in Ward 6

Polling Station in Wrong Ward: 7500MTR2208, Ward 22 P/S in Ward 7

Polling Station in Wrong Ward: 7500MTR0104, Ward 1 P/S in Ward 8
Polling Station in Wrong Ward: 7500MTR0810, Ward 8 P/S in Ward 9
Polling Station in Wrong Ward: 7500MTR0811, Ward 8 P/S in Ward 9
Polling Station in Wrong Ward: 7500MTR0812, Ward 8 P/S in Ward 9
Polling Station in Wrong Ward: 7500MTR2002, Ward 20 P/S in Ward 13

Non-Standard Polling Station numbering: Ward 6
Non-Standard Polling Station numbering: Ward 7
Non-Standard Polling Station numbering: Ward 9

Page 69

Polling Station in Wrong Ward: 7500MTR2001, Ward 20 P/S in Ward 14
Polling Station in Wrong Ward: 7500MTR2003, Ward 20 P/S in Ward 14
Polling Station in Wrong Ward: 7500MTR0903, Ward 9 P/S in Ward 16
Polling Station in Wrong Ward: 7500MTR1804, Ward 18 P/S in Ward 19
Polling Station in Wrong Ward: 7500MTR1504, Ward 15 P/S in Ward 20
Polling Station in Wrong Ward: 7500MTR0601, Ward 6 P/S in Ward 20
Polling Station in Wrong Ward: 7500MTR2206, Ward 22 P/S in Ward 21

Non-Standard Polling Station numbering: Ward 15
Non-Standard Polling Station numbering: Ward 16
Non-Standard Polling Station numbering: Ward 22

Page 70

Invalid Polling Station Code: 7500MTR27601

Polling Station in Wrong Ward: 7500MTR2405, Ward 24 P/S in Ward 25
Polling Station in Wrong Ward: 7500MTR2902, Ward 29 P/S in Ward 28

Non-Standard Polling Station numbering: Ward 26
Non-Standard Polling Station numbering: Ward 29

Page 71

Polling Station in Wrong Ward: 7500MTR0304, Ward 3 P/S in Ward 31
Polling Station in Wrong Ward: 7500MTR0302, Ward 3 P/S in Ward 31
Polling Station in Wrong Ward: 7500MTR0502, Ward 5 P/S in Ward 35
Polling Station in Wrong Ward: 7500MTR0503, Ward 5 P/S in Ward 35

Polling Station in Wrong Ward: 7500MTR2004, Ward 20 P/S in Ward 36

Non-Standard Polling Station numbering: Ward 34

Page 78

Non-Standard Polling Station numbering: Ward 2

Non-Standard Polling Station numbering: Ward 3

Non-Standard Polling Station numbering: Ward 4

Non-Standard Polling Station numbering: Ward 5

Non-Standard Polling Station numbering: Ward 6

Page 79

Non-Standard Polling Station numbering: Ward 9

Non-Standard Polling Station numbering: Ward 10

Non-Standard Polling Station numbering: Ward 12

Non-Standard Polling Station numbering: Ward 13

Non-Standard Polling Station numbering: Ward 15

Page 80

Non-Standard Polling Station numbering: Ward 17

Non-Standard Polling Station numbering: Ward 18

Non-Standard Polling Station numbering: Ward 20

Non-Standard Polling Station numbering: Ward 21

Page 81

Non-Standard Polling Station numbering: Ward 29

Non-Standard Polling Station numbering: Ward 30

Page 83

Non-Standard Polling Station numbering: Ward 4

Non-Standard Polling Station numbering: Ward 7

Non-Standard Polling Station numbering: Ward 8

Non-Standard Polling Station numbering: Ward 9
Non-Standard Polling Station numbering: Ward 10

Page 84

Voter Population Discrepancy: On the National Assembly constituency list for Manicaland, ZEC states that the total voter population for Buhera Central is 24,493 voters, but there is a different ward total of 24,493 on page 85.

Page 85

Voter Population Discrepancy: For Buhera Central, ZEC introduces in-text that the constituency has 24,493 voters. However, this contradicts the total of 25,296 voters on the table. Individually adding the ward populations gives a total of 24,493 voters which makes the tabulated constituency total incorrect.

Map-Report Discrepancy: In the report, Buhera RDC Ward 24 is presented as ward, but not as a constituency. However, in the maps, this ward is erroneously demarcated as an independent constituency. In addition, in the ward map, Buhera Central is presented with 7 wards {2, 19, 20, 21, 22, 23, and 32} instead of 8 wards. This contradicts the expectations based on the data in the report.

Page 87

Voter Population Discrepancy: In the report, on page 87, ZEC indicates that Chimanimani West has two wards from Mutare RDC that is, Ward 22 and 26. However, in the table on the same page, ZEC does not include Mutare RDC ward 26, but Ward 27. From the Local Authority data on page 57, Ward 26 has 2,866 voters while Ward 27 has 3,106 voters. The Chimanimani West table presented on Page 87 shows the 3,106 voters for Ward 27. The overall total for the constituency is 32,743 and this matched the ZEC total on both page 87 and page 84. Therefore, it can be confirmed that ZEC used Mutare RDC Ward 27 population when they calculated the Chimanimani constituency total. However, referring back to the map, Mutare RDC Ward 27 is not in Chimanimani West, but Mutare West, and that Mutare RDC Ward 26 is in fact under Chimanimani West. Therefore, the voter population presented by ZEC for Chimanimani West is incorrect as this was calculated using a distant Mutare RDC Ward 27 from another constituency, Mutare West, not Mutare RDC Ward 26. Ward 26 has also been incorporated under Mutare West constituency. Effectively, this makes the voter population totals for Chimanimani West and Mutare West false.

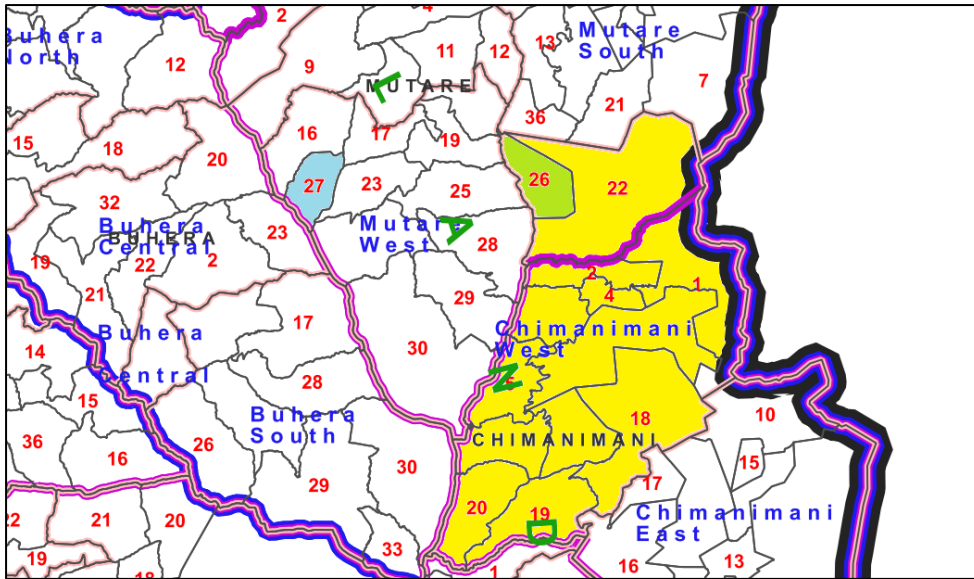


Figure 1: Composition of Chimanimani West, Ward 26 not Ward 27

In short, ZEC took a Mutare West ward that is 40km away from Chimanimani West constituency boundary then placed it under Chimanimani West. This has now affected the accuracy of the constituency voter population totals for both Mutare West and Chimanimani West constituencies.

Voter Population Discrepancy: On page 89, the Makoni RDC Ward 20 is presented as having a voter population of 2,284. However, this contradicts the population of 2,384 for the same ward that is presented on the local authority page 55 of the report. Effectively, we have two different voter populations for Headlands constituency. There was no way to establish the correct one, other than from the voters roll.

Incorrect Voter Population: Headlands constituency has an illegal Makoni RDC Ward 8 whose population is above the accepted 20% threshold. The subsequent voter population for Headlands is, therefore, inaccurate and this table will need to be revised. Further, in Section 13 on this page, ZEC states that Headlands constituency is comprised of Makoni RDC wards 6, 7, 8, 10, 11, 20, 32, 34, 37 and 38. However, on the table provided, ZEC does not include the Ward 10. However, Ward 10 is listed under Makoni North on page 90. The map also confirms that Headlands is under Makoni North. Therefore, the in-text description with the Headlands ward composition with Ward 10 might be wrong.

Makoni RDC Ward 8 had a population that was above the 20% threshold and therefore this will need resizing. Thus, the Headlands population will change.

Page 90

Incorrect Voter Population: The Headlands constituency voter population total might be wrong given the discrepancy in the Makoni RDC Ward 20 voter populations on pages 55 and 89 of the report.

Page 91

Incorrect Voter Population: Again, in light of the Makoni RDC illegal wards 12, 13, 16 and 25 whose voter population exceeded the prescribed limits, it follows that the declared voter population for Makoni West constituency of 23,544 is incorrect and must be changed.

Page 93

Missing Ward: On page 93, ZEC lists the wards for Mutare West constituency to be Mutasa RDC wards 16, 17, 18, 19, 23, 24, 25, 27, 28, 29 and 30. However, in the table on the same page, Ward 27 is not present. Rather, Ward 27 is presented under Chimanimani West constituency. Instead, Ward 26 is presented under Mutare West. From the previous discussion on question 87, we established that Ward 27 falls under Mutare West. Therefore, its missingness from the Mutare West constituency table implies that the Mutasa West constituency voter population presented on page 93 is incorrect.

Page 97

Illegal Ward: On page 97, ZEC sets the minimum ward voter population size for Bindura Municipality as 1,570 voters. However, on the same page, Ward 4 has a population of 1,559 which is below the acceptable threshold. The ward size will need to be increased

Page 98

Illegal Ward: Bindura Municipality Ward 4, below 20% threshold

Non-Standard Polling Station numbering: Ward 2

Non-Standard Polling Station numbering: Ward 3

Non-Standard Polling Station numbering: Ward 10

Page 101

Non-Standard Polling Station numbering: Ward 3

Non-Standard Polling Station numbering: Ward 6

Page 102

Duplicate Polling Station: 0500BIN1003

Duplicate Polling Station: 0500BIN1101

Duplicate Polling Station: 0500BIN1102

Duplicate Polling Station: 0500BIN1103

Duplicate Polling Station: 0500BIN1104

Duplicate Polling Station: 0500BIN1105

Invalid Local Authority Code: 0500**BINBIN**1203

Polling Station in Wrong Ward: 0500BIN0602, Ward 6 PS in Ward 10

Polling Station in Wrong Ward: 0500BIN0605, Ward 6 PS in Ward 10

Polling Station in Wrong Ward: 0500BIN1202, Ward 12 PS in Ward 10

Polling Station in Wrong Ward: 0500BIN1101, Ward 11 PS in Ward 12

Polling Station in Wrong Ward: 0500BIN1102, Ward 11 PS in Ward 12

Polling Station in Wrong Ward: 0500BIN1103, Ward 11 PS in Ward 12

Polling Station in Wrong Ward: 0500BIN1104, Ward 11 PS in Ward 12

Polling Station in Wrong Ward: 0500BIN1105, Ward 11 PS in Ward 12

Polling Station in Wrong Ward: 0500BIN1002, Ward 10 PS in Ward 13

Polling Station in Wrong Ward: 0500BIN1003, Ward 10 PS in Ward 13

Polling Station in Wrong Ward: 0500BIN1601, Ward 16 PS in Ward 18

Non-Standard Polling Station numbering: Ward 10

Non-Standard Polling Station numbering: Ward 12

Non-Standard Polling Station numbering: Ward 16

Page 103

Invalid Polling Station: 0500BIN200

Polling Station in Wrong Ward: 0500BIN0302, Ward 3 PS in Ward 19

Polling Station in Wrong Ward: 0500BIN0306, Ward 3 PS in Ward 19

Polling Station in Wrong Ward: 0500BIN0307, Ward 3 PS in Ward 19
Polling Station in Wrong Ward: 0500BIN1903, Ward 19 PS in Ward 21
Polling Station in Wrong Ward: 0500BIN1904, Ward 19 PS in Ward 21
Polling Station in Wrong Ward: 0500BIN1905, Ward 19 PS in Ward 21

Non-Standard Polling Station numbering: Ward 19
Non-Standard Polling Station numbering: Ward 21

Page 105

Non-Standard Polling Station numbering: Ward 5
Non-Standard Polling Station numbering: Ward 6
Non-Standard Polling Station numbering: Ward 8

Page 106

Non-Standard Polling Station numbering: Ward 9
Non-Standard Polling Station numbering: Ward 11
Non-Standard Polling Station numbering: Ward 14
Non-Standard Polling Station numbering: Ward 15
Non-Standard Polling Station numbering: Ward 17

Page 107

Non-Standard Polling Station numbering: Ward 19
Non-Standard Polling Station numbering: Ward 24

Page 109

Voter Population Discrepancy: On page 109, ZEC identifies the population for Guruve Rural District Council Ward 16 to be 1,994, however, on page 140 under Guruve North Constituency, the voter population is different: 1,993.

Page 110

Duplicate polling station: 7100GVE0605

Non-Standard Polling Station numbering: Ward 1
Non-Standard Polling Station numbering: Ward 2
Non-Standard Polling Station numbering: Ward 5

Page 111

Non-Standard Polling Station numbering: Ward 11
Non-Standard Polling Station numbering: Ward 12
Non-Standard Polling Station numbering: Ward 13
Non-Standard Polling Station numbering: Ward 16

Page 112

Non-Standard Polling Station numbering: Ward 18
Non-Standard Polling Station numbering: Ward 21
Non-Standard Polling Station numbering: Ward 22

Page 114

Polling Station in Wrong Ward: 1500MAZ0102, Ward 1 PS in Ward 4

Page 115

Non-Standard Polling Station numbering: Ward 8

Page 116

Non-Standard Polling Station numbering: Ward 14
Non-Standard Polling Station numbering: Ward 16
Non-Standard Polling Station numbering: Ward 19
Non-Standard Polling Station numbering: Ward 20

Page 117

Non-Standard Polling Station numbering: Ward 22
Non-Standard Polling Station numbering: Ward 25

Non-Standard Polling Station numbering: Ward 26
Non-Standard Polling Station numbering: Ward 27

Page 118

Duplicate Polling Station: 1500MAZ3406

Polling Station in Wrong Ward: 1500MAZ3405, Ward 34 PS in Ward 35
Polling Station in Wrong Ward: 1500MAZ3406, Ward 34 PS in Ward 35

Non-Standard Polling Station numbering: Ward 29
Non-Standard Polling Station numbering: Ward 31
Non-Standard Polling Station numbering: Ward 34

Page 119

Voter Population Discrepancy: ZEC presents the Mbire RDC Ward 15 voter population as 2,065. However, this contradicts with page 143 where ZEC cites the Ward 15 voter population as 2,059.

Page 120

Non-Standard Polling Station numbering: Ward 2
Non-Standard Polling Station numbering: Ward 3
Non-Standard Polling Station numbering: Ward 4
Non-Standard Polling Station numbering: Ward 7
Non-Standard Polling Station numbering: Ward 8
Non-Standard Polling Station numbering: Ward 9
Non-Standard Polling Station numbering: Ward 10

Page 121

Non-Standard Polling Station numbering: Ward 12

Page 123

Non-Standard Polling Station numbering: Ward 1
Non-Standard Polling Station numbering: Ward 3
Non-Standard Polling Station numbering: Ward 7

Page 124

Non-Standard Polling Station numbering: Ward 8
Non-Standard Polling Station numbering: Ward 10
Non-Standard Polling Station numbering: Ward 14
Non-Standard Polling Station numbering: Ward 16

Page 125

Invalid Polling Station Code: 1100MUZ201

Non-Standard Polling Station numbering: Ward 17
Non-Standard Polling Station numbering: Ward 21
Non-Standard Polling Station numbering: Ward 23
Non-Standard Polling Station numbering: Ward 24
Non-Standard Polling Station numbering: Ward 25

Page 126

Non-Standard Polling Station numbering: Ward 28

Page 129

Illegal Ward: On page 129, ZEC sets the minimum ward voter population size for Pfura Rural District Council to be 2,033 voters. However, on the same page, Ward 19 has a population of 2,028 which is below the acceptable threshold. The ward voter population size will need to be increased

Voter Population Discrepancy: ZEC presents the Pfura RDC Ward 9 voter population as 2,726. However, this contradicts with page 144 where ZEC cites the Ward 9 voter population as 1,722.

Page 130

Non-Standard Polling Station numbering: Ward 1
Non-Standard Polling Station numbering: Ward 2
Non-Standard Polling Station numbering: Ward 4

Voter Population Discrepancy: ZEC presents the Pfura RDC Ward 9 voter population as 2,726. However, this contradicts with page 144 where ZEC cites the Ward 9 voter population as 1,722.

- Non-Standard Polling Station numbering: Ward 6
- Non-Standard Polling Station numbering: Ward 8
- Non-Standard Polling Station numbering: Ward 9
- Non-Standard Polling Station numbering: Ward 10
- Non-Standard Polling Station numbering: Ward 11
- Non-Standard Polling Station numbering: Ward 12
- Non-Standard Polling Station numbering: Ward 13

Illegal Ward: Pfura RDC Ward 19, below 2015 threshold

- Non-Standard Polling Station numbering: Ward 14
- Non-Standard Polling Station numbering: Ward 17
- Non-Standard Polling Station numbering: Ward 18
- Non-Standard Polling Station numbering: Ward 19
- Non-Standard Polling Station numbering: Ward 20
- Non-Standard Polling Station numbering: Ward 21

Alpha-Numeral Mix-up: 45OOPFU2908, should be 00 not OO

- Non-Standard Polling Station numbering: Ward 23
- Non-Standard Polling Station numbering: Ward 24
- Non-Standard Polling Station numbering: Ward 26
- Non-Standard Polling Station numbering: Ward 27
- Non-Standard Polling Station numbering: Ward 28

Invalid Polling Station Code: 4500PFU02

Non-Standard Polling Station numbering: Ward 30
Non-Standard Polling Station numbering: Ward 31
Non-Standard Polling Station numbering: Ward 32
Non-Standard Polling Station numbering: Ward 33
Non-Standard Polling Station numbering: Ward 36

Page 135

Non-Standard Polling Station numbering: Ward 39
Non-Standard Polling Station numbering: Ward 40

Page 136

Voter Population Discrepancy: ZEC presents the Rushinga RDC Ward 9 voter population as 1,722. However, this contradicts with page 144 where ZEC cites the Rushinga RDC Ward 9 voter population as 2,726.

Non-Standard Polling Station numbering: Ward 2
Non-Standard Polling Station numbering: Ward 7
Non-Standard Polling Station numbering: Ward 8
Non-Standard Polling Station numbering: Ward 9

Page 137

Non-Standard Polling Station numbering: Ward 10
Non-Standard Polling Station numbering: Ward 11
Non-Standard Polling Station numbering: Ward 12
Non-Standard Polling Station numbering: Ward 13
Non-Standard Polling Station numbering: Ward 16
Non-Standard Polling Station numbering: Ward 17

Page 138

Non-Standard Polling Station numbering: Ward 21
Non-Standard Polling Station numbering: Ward 22
Non-Standard Polling Station numbering: Ward 23

Voter Population Discrepancy: ZEC presents Mt Darwin South constituency voter population as 29,624 voters, but from the table total on page 145, ZEC presents a different voter population of 25,532 for this constituency.

Voter Population Discrepancy: ZEC also presents the Mt Darwin West constituency voter population as 29,025. However, on page 145, ZEC presents a different voter population of 26,025 for the same constituency. This is a difference of 3,000 votes.

Incorrect Voter Population: Bindura North constituency has an illegal ward Bindura Municipality Ward 4 whose population is below the accepted 20% threshold. This table will need to be revised.

Incorrect Voter Population: The total voter population for Bindura North constituency is incorrect as this incorporates an illegal Bindura Municipality Ward 4 whose population was below the allowed threshold. The correct total can only be determined upon the reconfiguration of the illegal ward.

Voter Population Discrepancy: Here, the voter population for Guruve RDC Ward 16 is stated as 1,993, but on page 109, ZEC identifies the population for Guruve Rural District Council Ward 16 to be 1,994. This discrepancy affects the credibility of both the Local Authority totals as well as the constituency totals.

Missing Ward: On this page, ZEC states that Guruve North constituency comprises of Wards 2, 4, 5, 6, 16, 17, 18, 19, 20, 21 and 24 of Guruve Rural District Council. Ward 23 missing in the description. However, Ward 23 is present in the table. We also confirmed the presence of this ward on the National Wards map, and that it was under Guruve North constituency.

Voter Population Discrepancy: ZEC presents the Mbire RDC Ward 15 voter population as 2,059. However, this contradicts with page 119 where ZEC cites the Ward 15 voter population as 2,065.

Page 144

Voter Population Discrepancy: ZEC presents the Pfura RDC Ward 9 voter population as 1,722. However, this contradicts with page 129 where ZEC cites the Ward 9 voter population as 2,726.

Voter Population Discrepancy: ZEC presents the Rushinga RDC Ward 9 voter population as 2,726. However, this contradicts with page 135 where ZEC cites the Rushinga RDC Ward 9 voter population as 1,722.

Page 145

Voter Population Discrepancy: In the table, ZEC gives the total voter population for Mt Darwin West constituency as 26,025. However, in the text for the table as well as on page 139, there is a different voter population of 29,025. Further, adding the individual ward populations gives a total of 29,025 voters.

Voter Population Discrepancy: ZEC introduces the Mt Darwin South voter population as 29,624. However, ZEC further states that the total of the ward populations provided on the table is 25,532 voters. Adding these ward totals does not result in 25,532, but rather 29,624 voters.

Incorrect Voter Population: Mt Darwin West constituency has an illegal Pfura RDC Ward 19 whose voter population is below the accepted 20% threshold. The overall voter population for this constituency is, therefore, incorrect and will need to be revised upwards.

Page 149

Voter Population Discrepancy: On this page, ZEC lists Chikomba RDC Ward 8 as having 2,198 voters. However, if we compare with pages 151 and 193, the ward population is different by one voter, that is, 2,197.

Page 150

Voter Population Discrepancy: On this page, ZEC lists Chikomba RDC Ward 22 as having 1,719 voters. However, on page 203, the ward population for the same Ward 22 is 1,766.

Invalid Polling Station Code: 1800CHIK001

Page 151

Duplicate Polling Station: 1800CHIK1003

Non-Standard Polling Station numbering: Ward 7

Non-Standard Polling Station numbering: Ward 8

Page 152

Non-Standard Polling Station numbering: Ward 15

Non-Standard Polling Station numbering: Ward 17

Non-Standard Polling Station numbering: Ward 18

Non-Standard Polling Station numbering: Ward 19

Page 153

Non-Standard Polling Station numbering: Ward 23

Non-Standard Polling Station numbering: Ward 24

Non-Standard Polling Station numbering: Ward 27

Page 155

Wrong Local Authority Abbreviation: GZ: *All Wards on the page.* This was likely caused by the use of the numeral 1 (GZ1) instead of the letter I (GZI).

Invalid Polling Station Code: 2500GZ108

Invalid Polling Station Code: 2500GZ1019

Non-Standard Polling Station numbering: Ward 4

Non-Standard Polling Station numbering: Ward 5

Non-Standard Polling Station numbering: Ward 6

Page 156

Non-Standard Polling Station numbering: Ward 11

Non-Standard Polling Station numbering: Ward 12

Non-Standard Polling Station numbering: Ward 16

Wrong Local Authority Abbreviation: GZ: *All Wards on the page.* This was likely caused by the use of the numeral 1 (GZ1) instead of the letter I (GZI).

Page 157

Invalid Polling Station Code: 21940 (Ward 23)

Invalid Polling Station Code: 200GZ12303

Invalid Local Authority Code: 2500GZ2006

Non-Standard Polling Station numbering: Ward 20

Wrong Local Authority Abbreviation: GZ: *All Wards on the page.* This was likely caused by the use of the numeral 1 (GZ1) instead of the letter I (GZI).

Page 158

Wrong Local Authority Abbreviation: GZ: *All Wards on the page.* This was likely caused by the use of the numeral 1 (GZ1) instead of the letter I (GZI).

Page 160

Non-Standard Polling Station numbering: Ward 1

Non-Standard Polling Station numbering: Ward 4

Non-Standard Polling Station numbering: Ward 8

Non-Standard Polling Station numbering: Ward 9

Page 161

Non-Standard Polling Station numbering: Ward 10

Page 163

Illegal Ward: On page 163, ZEC sets the maximum ward voter population size for Marondera Municipality to be 3,051 voters. However, on the same page,

Ward 9 has a population of 3,057 which is above the acceptable threshold. The ward size will need to be reduced.

Invalid Polling Station Code: 4301MAM010 (Ward 1)

Invalid Local Authority Abbreviation: 4301MAMA0201

Page 164

Illegal Ward: Marondera Municipality Ward 9, above 20% threshold

Duplicate Polling Station: 4301MAM0804

Polling Station in Wrong Ward: 4301MAM0804, Ward 8 PS in Ward 11

Invalid Polling Station Code: 4301MAM050 (Ward 5)

Non-Standard Polling Station numbering: Ward 10

Page 166

Voter Population Discrepancy: On this page, ZEC lists Marondera RDC Ward 8 as having 2,262 voters. However, if we compare with page 202, the ward population has a totally different total of 2,253.

Voter Population Discrepancy: On this page, ZEC lists Marondera RDC Ward 10 as having 2,238 voters. However, if we compare with page 202, the ward population has a totally different total of 1,979.

Voter Population Discrepancy: On this page, ZEC lists Marondera RDC Ward 11 as having 2,587 voters. However, if we compare with page 202, the ward population has a totally different total of 1,660.

Page 167

Non-Standard Polling Station numbering: Ward 3

Non-Standard Polling Station numbering: Ward 5

Non-Standard Polling Station numbering: Ward 6

Page 168

Non-Standard Polling Station numbering: Ward 14
Non-Standard Polling Station numbering: Ward 15

Page 169

Non-Standard Polling Station numbering: Ward 23

Page 171

Non-Standard Polling Station numbering: Ward 2
Non-Standard Polling Station numbering: Ward 4
Non-Standard Polling Station numbering: Ward 7

Page 172

Non-Standard Polling Station numbering: Ward 10
Non-Standard Polling Station numbering: Ward 14
Non-Standard Polling Station numbering: Ward 15

Page 173

Non-Standard Polling Station numbering: Ward 18

Page 175

Non-Standard Polling Station numbering: Ward 5

Page 176

Non-Standard Polling Station numbering: Ward 8
Non-Standard Polling Station numbering: Ward 11
Non-Standard Polling Station numbering: Ward 12

Page 177

Non-Standard Polling Station numbering: Ward 16
Non-Standard Polling Station numbering: Ward 22
Non-Standard Polling Station numbering: Ward 23
Non-Standard Polling Station numbering: Ward 24

Page 178

Non-Standard Polling Station numbering: Ward 30

Page 180

Duplicate Polling Station: 4800MTK0303
Polling Station in Wrong Ward: 4800MTK0303, Ward 3 PS in Ward 6
Non-Standard Polling Station numbering: Ward 2
Non-Standard Polling Station numbering: Ward 5

Page 181

Duplicate Polling Station: 4800MTK0606
Polling Station in Wrong Ward: 4800MTK0606, Ward 6 PS in Ward 11
Missing sub-station: ZEC mentions 4800MTK1301A, but not B, C etc.
Missing sub-station: ZEC mentions 4800MTK1405B, but not A etc.
Non-Standard Polling Station numbering: Ward 7
Non-Standard Polling Station numbering: Ward 8
Non-Standard Polling Station numbering: Ward 11
Non-Standard Polling Station numbering: Ward 13
Non-Standard Polling Station numbering: Ward 14
Non-Standard Polling Station numbering: Ward 15

Page 182

Missing sub-station: ZEC mentions 4800MTK2202A, but not B, C etc.

Non-Standard Polling Station numbering: Ward 16
Non-Standard Polling Station numbering: Ward 17
Non-Standard Polling Station numbering: Ward 18
Non-Standard Polling Station numbering: Ward 19

Page 183

Non-Standard Polling Station numbering: Ward 25
Non-Standard Polling Station numbering: Ward 27
Non-Standard Polling Station numbering: Ward 29

Page 185

Invalid Polling Station Code: 2501RLB602
Invalid Polling Station Code: 01RLB0907

Duplicate Polling Station: 2501RLB0401

Non-Standard Polling Station numbering: Ward 7
Non-Standard Polling Station numbering: Ward 8
Non-Standard Polling Station numbering: Ward 9

Page 187

Non-Standard Polling Station numbering: Ward 2
Non-Standard Polling Station numbering: Ward 8
Non-Standard Polling Station numbering: Ward 9

Page 188

Invalid Polling Station Code: 800WED1403
Non-Standard Polling Station numbering: Ward 13

Page 189

Non-Standard Polling Station numbering: Ward 4
Non-Standard Polling Station numbering: Ward 8

Non-Standard Polling Station numbering: Ward 13

Voter Population Discrepancy: The overall voter population for Mashonaland East Province is stated as 641,668, when the total is in fact 644,256.

Voter Population Discrepancy: On the National Assembly constituency list for Mashonaland East, ZEC states that the total voter population for Wedza South constituency is 23,917 voters. However, from page 203, ZEC states a different population of 25,385 voters in the title. Adding the ward populations on page 260 gives a different total of 35,276 voters, but most importantly, the summation of the ward populations gives a third total of 23,964 voters.

Voter Population Discrepancy: On the same National Assembly constituency list for Mashonaland East, ZEC states that the total voter population for Wedza North constituency is 28,465 voters. However, from page 202, the summation of the ward populations gives a different total of 27,270 voters.

Voter Population Discrepancy: On this page, ZEC lists Chikomba Rural District Council Ward 8 as having 2,197 voters. However, this contradicts the total of 2,198 on page 149.

Incorrect Voter Population: Marondera Central constituency has an illegal ward Marondera Municipality Ward 9 whose population is above the accepted 20% threshold. This table, including the constituency voter population will therefore need to be revised.

Missing Ward: Marondera RDC Ward 7 is listed as being part of Marondera, East constituency, but is not in the table, and is under Wedza North on the map.

Voter Population Discrepancy: ZEC states that the total voter population for Wedza North constituency is 28,465 voters. However, adding the individual wards gives a different total of 27,270 voters.

Voter Population Discrepancy: The voter population for Wards 8, 10 and 11 is inconsistent with the ward population on Local Authority data on page 166. On this page, ZEC states that for Marondera RDC Ward 8, the population is 2,253, but on page 166, the population is 2,262 voters. For Marondera RDC Ward 10 ZEC states that the population is 1,979, but on page 166, there is a different population of 2,238 voters. Lastly, for Marondera RDC Ward 11, ZEC states that the population is 1,660, but on page 166, ZEC presents a totally different population of 2,587 voters.

Missing Ward: ZEC states that Wedza North comprises of Wards 1, 2, 3, 4, 5, 6, 14 and 15 from Wedza Rural District Council and Wards 5, 8, 10 and 11 from Marondera Rural District Council. However, Marondera RDC Ward 7 has been excluded, yet it is present in the table below the text as well as on the map.

Voter Population Discrepancy: ZEC states that Chikomba RDC Ward 22 has 1,766 voters, but the Local Authority data on page 150 states a different voter population for the ward to be 1,719.

Voter Population Discrepancy: ZEC states that the total voter population for Wedza South constituency is 25,385 voters. In the total, ZEC gives a different total of 23,917. However, adding the individual wards gives a third different voter population of 23,964 voters.

Missing Ward: Wedza South Ward 23 is listed, but not in the table. On the map, Ward 23 is under Chikomba East

Invalid Polling Station Code: 3201CHM04015

Non-Standard Polling Station numbering: Ward 3

Non-Standard Polling Station numbering: Ward 8
Non-Standard Polling Station numbering: Ward 10

Page 206

Non-Standard Polling Station numbering: Ward 11
Non-Standard Polling Station numbering: Ward 12

Page 208

Non-Standard Polling Station numbering: Ward 1
Non-Standard Polling Station numbering: Ward 2
Non-Standard Polling Station numbering: Ward 4
Non-Standard Polling Station numbering: Ward 6

Page 209

Non-Standard Polling Station numbering: Ward 8
Non-Standard Polling Station numbering: Ward 9
Non-Standard Polling Station numbering: Ward 10
Non-Standard Polling Station numbering: Ward 11
Non-Standard Polling Station numbering: Ward 12

Page 210

Invalid Polling Station Code: 3200CHE150
Invalid Polling Station Code: 32000CHE1502
Invalid Polling Station Code: 32000CHE1507

Non-Standard Polling Station numbering: Ward 15
Non-Standard Polling Station numbering: Ward 19
Non-Standard Polling Station numbering: Ward 20
Non-Standard Polling Station numbering: Ward 22

Page 211

Non-Standard Polling Station numbering: Ward 23

Non-Standard Polling Station numbering: Ward 24

Non-Standard Polling Station numbering: Ward 25

Non-Standard Polling Station numbering: Ward 26

Page 212

Duplicate Polling Station: 7001CHIM1001

Duplicate Polling Station: 7001CHIM1003

Polling Station in Wrong Ward: 7001CHIM1001, Ward 10 P/S in Ward 1

Polling Station in Wrong Ward: 7001CHIM1003, Ward 10 P/S in Ward 1

Page 213

Non-Standard Polling Station numbering: Ward 4

Non-Standard Polling Station numbering: Ward 6

Non-Standard Polling Station numbering: Ward 9

Page 214

Duplicate Polling Station: 7001CHIM0904

Duplicate Polling Station: 7001CHIM1002

Polling Station in Wrong Ward: 7001CHIM1002, Ward 10 P/S in Ward 11

Polling Station in Wrong Ward: 7001CHIM0402, Ward 4 P/S in Ward 12

Polling Station in Wrong Ward: 7001CHIM0901, Ward 9 P/S in Ward 14

Polling Station in Wrong Ward: 7001CHIM0904, Ward 9 P/S in Ward 14

Polling Station in Wrong Ward: 7001CHIM1404, Ward 14 P/S in Ward 15

Non-Standard Polling Station numbering: Ward 12

Non-Standard Polling Station numbering: Ward 13

Page 216

Voter Population Discrepancy: On this page 216, ZEC states that Hurungwe Rural District Council Ward 14 has 4,404 voters, but on page 254, there is a different population of 4,405 for the same ward.

Page 217

Non-Standard Polling Station numbering: Ward 1
Non-Standard Polling Station numbering: Ward 3
Non-Standard Polling Station numbering: Ward 4
Non-Standard Polling Station numbering: Ward 5

Page 218

Invalid Polling Station Code: **380**HUR08011

Non-Standard Polling Station numbering: Ward 7
Non-Standard Polling Station numbering: Ward 8
Non-Standard Polling Station numbering: Ward 9
Non-Standard Polling Station numbering: Ward 10
Non-Standard Polling Station numbering: Ward 11
Non-Standard Polling Station numbering: Ward 13

Page 219

Non-Standard Polling Station numbering: Ward 14
Non-Standard Polling Station numbering: Ward 16
Non-Standard Polling Station numbering: Ward 13

Page 220

Duplicate Polling Station: 3800HUR2109
Duplicate Polling Station: 3800HUR2110

Non-Standard Polling Station numbering: Ward 21
Non-Standard Polling Station numbering: Ward 22

Page 221

Voter Population Discrepancy: ZEC states that the total voter population for Kadoma Municipality Ward 9 is 2,358 voters. However, on page 261, there is a different voter population of 2,592 voters.

Non-Standard Polling Station numbering: Ward 1

Voter Population Discrepancy: ZEC states that the total voter population for Kadoma Municipality Ward 9 is 2,358 voters. However, on page 261, there is a different voter population of 2,592 voters.

Polling Station in Wrong Ward: 2401KAD0702, Ward 7 P/S in Ward 2
Polling Station in Wrong Ward: 2401KAD0401, Ward 4 P/S in Ward 3
Polling Station in Wrong Ward: 2401KAD0701, Ward 7 P/S in Ward 3
Polling Station in Wrong Ward: 2401KAD0802, Ward 8 P/S in Ward 4
Polling Station in Wrong Ward: 2401KAD0601, Ward 6 P/S in Ward 4
Polling Station in Wrong Ward: 2401KAD0202, Ward 2 P/S in Ward 5
Polling Station in Wrong Ward: 2401KAD1303, Ward 13 P/S in Ward 6
Polling Station in Wrong Ward: 2401KAD0302, Ward 3 P/S in Ward 7
Polling Station in Wrong Ward: 2401KAD0102, Ward 1 P/S in Ward 7
Polling Station in Wrong Ward: 2401KAD0803, Ward 8 P/S in Ward 7
Polling Station in Wrong Ward: 2401KAD1302, Ward 13 P/S in Ward 7
Polling Station in Wrong Ward: 2401KAD0301, Ward 3 P/S in Ward 8
Polling Station in Wrong Ward: 2401KAD1402, Ward 14 P/S in Ward 9

Non-Standard Polling Station numbering: Ward 10

Duplicate Polling Station: 2401KAD1201
Duplicate Polling Station: 2401KAD1202

Duplicate Polling Station: 2401KAD1603
Polling Station in Wrong Ward: 2401KAD1603, Ward 16 P/S in Ward 12
Polling Station in Wrong Ward: 2401KAD1603, Ward 16 P/S in Ward 13
Polling Station in Wrong Ward: 2401KAD1202, Ward 12 P/S in Ward 13
Polling Station in Wrong Ward: 2401KAD1201, Ward 12 P/S in Ward 13
Polling Station in Wrong Ward: 2401KAD0104, Ward 1 P/S in Ward 14
Polling Station in Wrong Ward: 2401KAD1203, Ward 12 P/S in Ward 17

Non-Standard Polling Station numbering: Ward 14
Non-Standard Polling Station numbering: Ward 16

Non-Standard Polling Station numbering: Ward 2

Page 227

Non-Standard Polling Station numbering: Ward 6
Non-Standard Polling Station numbering: Ward 7
Non-Standard Polling Station numbering: Ward 10

Page 228

Voter Population Discrepancy: There is a huge discrepancy involving multiple wards from Makonde RDC.

Ward 2 has 3,998 voters on page 228, but on page 257 it has 2,951
Ward 3 has 3,537 voters on page 228, but on page 257 it has 3,216
Ward 4 has 3,358 voters on page 228, but on page 257 it has 2,966
Ward 5 has 2,909 voters on page 228, but on page 257 it has 3,459
Ward 6 has 2,944 voters on page 228, but on page 257 it has 3,998
Ward 10 has 2,951 voters on page 228, but on page 257 it has 3,537
Ward 11 has 3,216 voters on page 228, but on page 257 it has 3,358
Ward 13 has 2,966 voters on page 228, but on page 257 it has 2,909
Ward 15 has 3,693 voters on page 228, but on page 257 it has 2,944

Page 229

Voter Population Discrepancy: Wards 2,3,4,5,6 vs page 257-8

Non-Standard Polling Station numbering: Ward 1
Non-Standard Polling Station numbering: Ward 2
Non-Standard Polling Station numbering: Ward 4
Non-Standard Polling Station numbering: Ward 5
Non-Standard Polling Station numbering: Ward 8

Page 230

Voter Population Discrepancy: Wards 10,11,13,15 vs page 257-8

Non-Standard Polling Station numbering: Ward 9
Non-Standard Polling Station numbering: Ward 11
Non-Standard Polling Station numbering: Ward 13
Non-Standard Polling Station numbering: Ward 16

Page 233

Non-Standard Polling Station numbering: Ward 4

Page 234

Non-Standard Polling Station numbering: Ward 11
Non-Standard Polling Station numbering: Ward 12
Non-Standard Polling Station numbering: Ward 13
Non-Standard Polling Station numbering: Ward 14

Page 235

Invalid Polling Station Code: **321**NTC0101
Invalid Polling Station Code: **321**NTC0103
Invalid Polling Station Code: **321**NTC0104
Invalid Polling Station Code: **321**NTC0105
Invalid Polling Station Code: **321**NTC0106
Invalid Polling Station Code: **321**NTC0107

Non-Standard Polling Station numbering: Ward 1

Page 236

Non-Standard Polling Station numbering: Ward 5
Non-Standard Polling Station numbering: Ward 6

Page 237

Duplicate Polling Station: 3201NTC1303
Non-Standard Polling Station numbering: Ward 12

Page 242

Duplicate Polling Station: 2400SAN0502
Duplicate Polling Station: 2400SAN1301

Polling Station in Wrong Ward: 2400SAN0202, Ward 2 P/S in Ward 4
Polling Station in Wrong Ward: 2400SAN0203, Ward 2 P/S in Ward 4
Polling Station in Wrong Ward: 2400SAN0502, Ward 5 P/S in Ward 4
Polling Station in Wrong Ward: 2400SAN0211, Ward 2 P/S in Ward 4
Polling Station in Wrong Ward: 2400SAN1203, Ward 12 P/S in Ward 5
Polling Station in Wrong Ward: 2400SAN0702, Ward 7 P/S in Ward 6
Polling Station in Wrong Ward: 2400SAN1202, Ward 12 P/S in Ward 6
Polling Station in Wrong Ward: 2400SAN03011, Ward 3 P/S in Ward 7
Polling Station in Wrong Ward: 2400SAN0309, Ward 3 P/S in Ward 7
Polling Station in Wrong Ward: 2400SAN0301, Ward 3 P/S in Ward 7
Polling Station in Wrong Ward: 2400SAN0306, Ward 5 P/S in Ward 7
Polling Station in Wrong Ward: 2400SAN1301, Ward 13 P/S in Ward 8
Polling Station in Wrong Ward: 2400SAN1302, Ward 13 P/S in Ward 8
Polling Station in Wrong Ward: 2400SAN1401, Ward 14 P/S in Ward 8
Polling Station in Wrong Ward: 2400SAN1402, Ward 14 P/S in Ward 8
Polling Station in Wrong Ward: 2400SAN1501, Ward 15 P/S in Ward 8
Polling Station in Wrong Ward: 2400SAN1502, Ward 15 P/S in Ward 8
Polling Station in Wrong Ward: 2400SAN0509, Ward 5 P/S in Ward 9
Polling Station in Wrong Ward: 2400SAN0502, Ward 5 P/S in Ward 9
Polling Station in Wrong Ward: 2400SAN0507, Ward 5 P/S in Ward 9
Polling Station in Wrong Ward: 2400SAN0510, Ward 5 P/S in Ward 9

Non-Standard Polling Station numbering: Ward 1
Non-Standard Polling Station numbering: Ward 2
Non-Standard Polling Station numbering: Ward 3
Non-Standard Polling Station numbering: Ward 4
Non-Standard Polling Station numbering: Ward 5
Non-Standard Polling Station numbering: Ward 6
Non-Standard Polling Station numbering: Ward 7
Non-Standard Polling Station numbering: Ward 8
Non-Standard Polling Station numbering: Ward 9

Invalid Polling Station Code: 24SAN1705

Duplicate Polling Station: 2400SAN0108

Duplicate Polling Station: 2400SAN1301

Polling Station in Wrong Ward: 2400SAN0901, Ward 9 P/S in Ward 10

Polling Station in Wrong Ward: 2400SAN0902, Ward 9 P/S in Ward 10

Polling Station in Wrong Ward: 2400SAN0204, Ward 2 P/S in Ward 12

Polling Station in Wrong Ward: 2400SAN0207, Ward 2 P/S in Ward 12
Polling Station in Wrong Ward: 2400SAN0209, Ward 2 P/S in Ward 12
Polling Station in Wrong Ward: 2400SAN0213, Ward 2 P/S in Ward 12
Polling Station in Wrong Ward: 2400SAN0201, Ward 2 P/S in Ward 12
Polling Station in Wrong Ward: 2400SAN0312, Ward 3 P/S in Ward 12
Polling Station in Wrong Ward: 2400SAN0402, Ward 4 P/S in Ward 13
Polling Station in Wrong Ward: 2400SAN0404, Ward 4 P/S in Ward 13
Polling Station in Wrong Ward: 2400SAN0407, Ward 4 P/S in Ward 13
Polling Station in Wrong Ward: 2400SAN0403, Ward 4 P/S in Ward 13
Polling Station in Wrong Ward: 2400SAN0210, Ward 2 P/S in Ward 13
Polling Station in Wrong Ward: 2400SAN0505, Ward 5 P/S in Ward 13
Polling Station in Wrong Ward: 2400SAN0504, Ward 5 P/S in Ward 13
Polling Station in Wrong Ward: 2400SAN0101, Ward 1 P/S in Ward 14
Polling Station in Wrong Ward: 2400SAN0111, Ward 1 P/S in Ward 14
Polling Station in Wrong Ward: 2400SAN0113, Ward 1 P/S in Ward 14
Polling Station in Wrong Ward: 2400SAN0115, Ward 1 P/S in Ward 14
Polling Station in Wrong Ward: 2400SAN0104, Ward 1 P/S in Ward 14
Polling Station in Wrong Ward: 2400SAN0108, Ward 1 P/S in Ward 14
Polling Station in Wrong Ward: 2400SAN0308, Ward 3 P/S in Ward 15
Polling Station in Wrong Ward: 2400SAN0303, Ward 3 P/S in Ward 15
Polling Station in Wrong Ward: 2400SAN0310, Ward 3 P/S in Ward 15
Polling Station in Wrong Ward: 2400SAN0302, Ward 3 P/S in Ward 15
Polling Station in Wrong Ward: 2400SAN0307, Ward 3 P/S in Ward 15
Polling Station in Wrong Ward: 2400SAN1301, Ward 3 P/S in Ward 17

Non-Standard Polling Station numbering: Ward 16

Non-Standard Polling Station numbering: Ward 17

Page 244

Polling Station in Wrong Ward: 2400SAN1204, Ward 12 P/S in Ward 18

Polling Station in Wrong Ward: 2400SAN1201, Ward 12 P/S in Ward 18

Page 245

Voter Population Discrepancy: ZEC states that the total voter population for Zvimba RDC Ward 22 is 3,005 voters. However, on page 261, there is a different voter population of 3,703 voters.

Illegal Wards: On page 245, ZEC sets the minimum ward voter population size for Zvimba Rural District Council to be 2,608 voters. However, based on the

calculations using the raw ward data presented on this page, the correct minimum is 2,654 voters, not 2,608. Effectively, this makes Ward 6 an illegal ward as this has a voter population of 2,624. This also makes Ward 18 an illegal ward as the voter population is 2,622, and both will need to be revised upwards.

Still, on the same page, ZEC sets the maximum ward voter population size for Zvimba Rural District Council to be 3,912 voters. Ward 1 has a population of 4,675 which is way above the acceptable maximum threshold. The ward size will thus need to be revised downwards.

Page 246

Voter Population Discrepancy: ZEC states that the total voter population for Zvimba RDC Ward 29 is 3,377 voters. However, on page 260, there is a different voter population of 3,889 voters.

Voter Population Discrepancy: ZEC states that the total voter population for Zvimba RDC Ward 34 is 3,703 voters. However, on page 261, there is a different voter population of 3,005 voters.

Voter Population Discrepancy: The total voter population according to ZEC for Zvimba RDC is 114,113. However, calculating from the data provided gives a total of 116,113, that is a difference of 2,000 voters.

Illegal Ward: Zvimba Rural District Council Ward 1, above 20% threshold

Illegal Ward: Zvimba Rural District Council Ward 6, below 20% threshold

Invalid Polling Station Code: 8600ZVI860202

Invalid Polling Station Code: 8600ZVI860203

Invalid Polling Station Code: 8600ZVI860204

Invalid Polling Station Code: 8600ZVI860205

Invalid Polling Station Code: 8600ZVI860206

Non-Standard Polling Station numbering: Ward 13

Non-Standard Polling Station numbering: Ward 15

Page 247

Non-Standard Polling Station numbering: Ward 13

Non-Standard Polling Station numbering: Ward 15

Voter Population Discrepancy: ZEC states that the total voter population for Zvimba RDC Ward 22 is 3,005 voters. However, on page 261 of the delimitation report, there is a different voter population of 3,703 voters.

Illegal Ward: Zvimba Rural District Council Ward 18, below 20% threshold

Invalid Polling Station Code: 8600ZVI170

Duplicate Polling Station: 8600ZVI1802

Non-Standard Polling Station numbering: Ward 17

Non-Standard Polling Station numbering: Ward 18

Non-Standard Polling Station numbering: Ward 19

Non-Standard Polling Station numbering: Ward 20

Non-Standard Polling Station numbering: Ward 21

Non-Standard Polling Station numbering: Ward 22

Non-Standard Polling Station numbering: Ward 26

Non-Standard Polling Station numbering: Ward 28

Non-Standard Polling Station numbering: Ward 30

Non-Standard Polling Station numbering: Ward 32

Non-Standard Polling Station numbering: Ward 35

Voter Population Discrepancy: On the National Assembly constituency list for Mashonaland West Province, ZEC states that the total voter population for Mhangura constituency is 33,117, but when the ward populations on page 257 are added together, there is totally different total of 32,883 voters.

Voter Population Discrepancy: Second, On the same Mashonaland West list, ZEC states that the total voter population for Kadoma Central constituency is

32,277, but when the ward populations are added together on page 255, there is a different total of 32,511 voters.

Voter Population Discrepancy: On the National Assembly constituency list for Mashonaland West, ZEC also states that the total voter population for Zvimba East constituency is 32,764 voters. However, adding the ward populations on page 260 gives a different total of 35,276 voters.

Invalid Local Authority: Kadoma City Council, should be Kadoma Municipality
Chakari, Kadoma Ward 10 not in Chakari on the map

Page 252

Invalid Local Authority: Kadoma City Council, should be Kadoma Municipality
Chakari, Kadoma Ward 10 not in Chakari on the map

Page 253

Missing Ward: Chinhoyi Ward 1 is not on list, but in table.

Page 254

Voter Population Discrepancy: The voter population for Hurungwe Rural District Council Ward 14 is 4,405, but on the Local Authority data on page 216, there is a different population of 4,404 voters.

Page 255

Voter Population Discrepancy: ZEC states that the total voter population for Kadoma Municipality Ward 9 is 2,592 voters, however, from the Local Authority data on page 221, the population is different at 2,358 voters

Voter Population Discrepancy: ZEC states that the total voter population for Kadoma Central is 32,277 voters. However, adding the ward populations gives a totally different total of 32,511 voters.

Invalid Local Authority: Kadoma City Council, should be Kadoma Municipality

Page 257

Voter Population Discrepancy: ZEC states that the total voter population for Mhangura constituency is 33,117 voters. However, summing up the ward populations gives a totally different total of 32,883 voters.

Page 258

Voter Population Discrepancy: Wards 2,3,4,5,6,10,11,13,15 vs page 227
Invalid Local Authority: Kadoma City Council, should be Kadoma Municipality

Page 260

Voter Population Discrepancy: ZEC states that the total voter population for Zvimba East constituency is 32,764 voters. However, adding the ward populations gives a totally different total of 35,276 voters.

Incorrect Voter Population: Zvimba East constituency has an illegal Zvimba RDC Ward 1 whose population is way above the accepted 20% threshold. The constituency voter population is therefore incorrect and will need to be revised downwards after reconfiguring Ward 1.

Incorrect Voter Population: Zvimba North constituency has an illegal Zvimba RDC Ward 18 whose population is below the accepted 20% threshold. The constituency voter population is incorrect and will need to be revised upwards after reconfiguring Ward 18.

Incorrect Voter Population: Zvimba South constituency has an illegal Zvimba RDC Ward 6 whose population is below the accepted 20% threshold. The constituency voter population is thus incorrect and will need to be revised upwards after reconfiguring Ward 6.

Missing Ward: In the text description for Zvimba East constituency, ward 7 is listed. However, this is not in the table presented.

Page 261

Voter Population Discrepancy: ZEC states that the ward voter population for Zvimba South Ward 34 is 3,005 voters. However, from page 246 and 250 of the ZEC report, there is a different population of 3,703.

Missing Ward: Under Zvimba East constituency, ZEC mentions that Zvimba RDC Ward 29 is part of the wards, however, this is missing from the table with the wards presented therein below the statement in question.

Page 263

Duplicate Polling Station: 0400BKT0205

Polling Station in Wrong Ward: 0400BKT0205, Ward 2 P/S in Ward 1

Page 264

Invalid Polling Station Code: 400BKT0502

Duplicate Polling Station: 0400BKT0805

Polling Station in Wrong Ward: 0400BKT0805, Ward 8 P/S in Ward 7

Page 265

Invalid Polling Station Code: 400BKT1804

Duplicate Polling Station: 0400BKT2004

Polling Station in Wrong Ward: 0400BKT2004, Ward 20 P/S in Ward 18

Page 266

Invalid Polling Station Code: 400BKT2701

Page 271

Non-Standard Polling Station numbering: Ward 2

Page 272

Invalid Local Authority Code: 1400CHRCHR1301

Page 273

Duplicate Polling Station: 1400CHR2204

Non-Standard Polling Station numbering: Ward 21

Page 277

Non-Standard Polling Station numbering: Ward 3

Non-Standard Polling Station numbering: Ward 4

Non-Standard Polling Station numbering: Ward 5

Non-Standard Polling Station numbering: Ward 6

Page 278

Wrong District Code: 1300CHV1304, must be 12 not 13

Non-Standard Polling Station numbering: Ward 7

Non-Standard Polling Station numbering: Ward 8

Non-Standard Polling Station numbering: Ward 10

Non-Standard Polling Station numbering: Ward 11

Non-Standard Polling Station numbering: Ward 12

Non-Standard Polling Station numbering: Ward 14

Page 279

Non-Standard Polling Station numbering: Ward 16

Non-Standard Polling Station numbering: Ward 19

Non-Standard Polling Station numbering: Ward 21

Non-Standard Polling Station numbering: Ward 22

Non-Standard Polling Station numbering: Ward 23

Page 280

Non-Standard Polling Station numbering: Ward 25

Non-Standard Polling Station numbering: Ward 26

Non-Standard Polling Station numbering: Ward 27

Non-Standard Polling Station numbering: Ward 28
Non-Standard Polling Station numbering: Ward 30
Non-Standard Polling Station numbering: Ward 31
Non-Standard Polling Station numbering: Ward 32

Page 282

Invalid Polling Station Code: 27000GTU0107

Non-Standard Polling Station numbering: Ward 1
Non-Standard Polling Station numbering: Ward 3

Page 283

Invalid Polling Station Code: 2700GTU270506

Non-Standard Polling Station numbering: Ward 7
Non-Standard Polling Station numbering: Ward 8
Non-Standard Polling Station numbering: Ward 10
Non-Standard Polling Station numbering: Ward 11
Non-Standard Polling Station numbering: Ward 12
Non-Standard Polling Station numbering: Ward 13

Page 284

Non-Standard Polling Station numbering: Ward 16
Non-Standard Polling Station numbering: Ward 21

Page 285

Non-Standard Polling Station numbering: Ward 23
Non-Standard Polling Station numbering: Ward 29
Non-Standard Polling Station numbering: Ward 30

Page 286

Non-Standard Polling Station numbering: Ward 32
Non-Standard Polling Station numbering: Ward 33

Non-Standard Polling Station numbering: Ward 34
Non-Standard Polling Station numbering: Ward 40

Page 287

Non-Standard Polling Station numbering: Ward 41

Page 301

Non-Standard Polling Station numbering: Ward 3
Non-Standard Polling Station numbering: Ward 4

Page 302

Non-Standard Polling Station numbering: Ward 7
Non-Standard Polling Station numbering: Ward 8
Non-Standard Polling Station numbering: Ward 9
Non-Standard Polling Station numbering: Ward 10
Non-Standard Polling Station numbering: Ward 11
Non-Standard Polling Station numbering: Ward 13

Page 303

Non-Standard Polling Station numbering: Ward 15
Non-Standard Polling Station numbering: Ward 19

Page 304

Polling Station in Wrong Ward: 8300ZKA2006, Ward 20 P/S in Ward 29

Non-Standard Polling Station numbering: Ward 25
Non-Standard Polling Station numbering: Ward 26
Non-Standard Polling Station numbering: Ward 28
Non-Standard Polling Station numbering: Ward 29
Non-Standard Polling Station numbering: Ward 31

Page 305

Duplicate Polling Station: 8300ZKA3304

Page 320

Non-Standard Polling Station numbering: Ward 2
Non-Standard Polling Station numbering: Ward 3
Non-Standard Polling Station numbering: Ward 6

Page 321

Non-Standard Polling Station numbering: Ward 7
Non-Standard Polling Station numbering: Ward 8
Non-Standard Polling Station numbering: Ward 13
Non-Standard Polling Station numbering: Ward 14

Page 322

Non-Standard Polling Station numbering: Ward 16
Non-Standard Polling Station numbering: Ward 17
Non-Standard Polling Station numbering: Ward 21

Page 324

Voter Population Discrepancy: ZEC states that the ward voter population for Bubi RDC Ward 19 is 1,158 voters. However, from page 358 of the ZEC report, there is a different population of 1,234.

Voter Population Discrepancy: ZEC states that the ward voter population for Bubi RDC Ward 23 is 1,234 voters. However, from page 358 of the ZEC report, there is a different population of 1,158.

Page 325

Non-Standard Polling Station numbering: Ward 1

Non-Standard Polling Station numbering: Ward 4

Page 326

Non-Standard Polling Station numbering: Ward 10

Non-Standard Polling Station numbering: Ward 11

Non-Standard Polling Station numbering: Ward 15

Non-Standard Polling Station numbering: Ward 18

Page 327

Voter Population Discrepancy: ZEC states that the ward voter population for Bubi RDC Ward 19 is 1,158 and that Ward 23 is 1,234, however, from page 358, the population for Ward 19 is 1,234 and for Ward 23 1,158 respectively.

Non-Standard Polling Station numbering: Ward 20

Non-Standard Polling Station numbering: Ward 21

Non-Standard Polling Station numbering: Ward 22

Non-Standard Polling Station numbering: Ward 23

Page 329

Fake District: 1701HLB1001

Fake District: 1701HLB1002

Fake District: 1701HLB1301

Fake District: 1701HLB1302

Page 331

Illegal Wards: On page 331, ZEC sets the minimum ward voter population size for Hwange Rural District Council to be 1,474 voters. However, on the same page, 4 wards have a population below the acceptable threshold.:

Ward 8 has 1,019 voters

Ward 12 has 1,411 voters

Ward 18 has 1,438 voters

Ward 19 has 1,294 voters

These ward sizes will need to be reconfigured and resized upwards

Illegal Wards: On page 331, ZEC sets the minimum ward voter population size for Hwange Rural District Council to be 2,211 voters. However, on the same page, 3 wards have a population above the acceptable threshold.

Ward 2 has 2,267 voters

Ward 11 has 2,390 voters

Ward 17 has 2,213 voters

These ward sizes will need to be reconfigured and resized downwards.

Page 332

Illegal Ward: Hwange RDC Ward 2, above 20% threshold

Illegal Ward: Hwange RDC Ward 8, below 20% threshold

Page 333

Illegal Ward: Hwange RDC Ward 11, above 20% threshold

Illegal Ward: Hwange RDC Ward 12, below 20% threshold

Illegal Ward: Hwange RDC Ward 17, above 20% threshold

Page 334

Illegal Ward: Hwange RDC Ward 18, below 20% threshold

Illegal Ward: Hwange RDC Ward 19, below 20% threshold

Page 336

Duplicate Polling Station: 4100KUS0405

Polling Station in Wrong Ward: 4100KUS0405, Ward 4 P/S in Ward 5

Non-Standard Polling Station numbering: Ward 2

Non-Standard Polling Station numbering: Ward 3

Non-Standard Polling Station numbering: Ward 4

Page 337

Non-Standard Polling Station numbering: Ward 11

Non-Standard Polling Station numbering: Ward 12

Non-Standard Polling Station numbering: Ward 13
Non-Standard Polling Station numbering: Ward 15
Non-Standard Polling Station numbering: Ward 16

Page 338

Non-Standard Polling Station numbering: Ward 21

Page 339

Non-Standard Polling Station numbering: Ward 28

Page 340

Non-existent Ward: 4101LLB2901, Ward 29 does not exist
Non-existent Ward: 4101LLB3001, Ward 30 does not exist
Non-existent Ward: 4101LLB3101, Ward 31 does not exist

Page 342

Non-Standard Polling Station numbering: Ward 1
Non-Standard Polling Station numbering: Ward 2
Non-Standard Polling Station numbering: Ward 5
Non-Standard Polling Station numbering: Ward 6
Non-Standard Polling Station numbering: Ward 7

Page 343

Non-Standard Polling Station numbering: Ward 9
Non-Standard Polling Station numbering: Ward 10
Non-Standard Polling Station numbering: Ward 14
Non-Standard Polling Station numbering: Ward 16

Page 344

Non-Standard Polling Station numbering: Ward 17

Non-Standard Polling Station numbering: Ward 19
Non-Standard Polling Station numbering: Ward 22
Non-Standard Polling Station numbering: Ward 24

Page 345

Incorrect Local Authority Code: 5300NK2905
Incorrect Local Authority Code: 5300NK3001
Incorrect Local Authority Code: 5300NK3002
Incorrect Local Authority Code: 5300NK3003
Incorrect Local Authority Code: 5300NK3004
Incorrect Local Authority Code: 5300NK3005

Non-Standard Polling Station numbering: Ward 29

Page 346

Voter Population Discrepancy: On page 346, ZEC reports the total voter population for Tsholotsho Rural District Council to be 38,219. However, adding the individual ward populations results in a different population of 38,619.

Page 347

Non-Standard Polling Station numbering: Ward 1
Non-Standard Polling Station numbering: Ward 2
Non-Standard Polling Station numbering: Ward 3
Non-Standard Polling Station numbering: Ward 4
Non-Standard Polling Station numbering: Ward 5
Non-Standard Polling Station numbering: Ward 6
Non-Standard Polling Station numbering: Ward 8

Page 348

Invalid Polling Station Code: 730TSH1405

Duplicate Polling Station: 7300TSH1603

Non-Standard Polling Station numbering: Ward 9

Non-Standard Polling Station numbering: Ward 10
Non-Standard Polling Station numbering: Ward 12
Non-Standard Polling Station numbering: Ward 13
Non-Standard Polling Station numbering: Ward 15
Non-Standard Polling Station numbering: Ward 16
Non-Standard Polling Station numbering: Ward 17

Page 349

Alpha-Numerical Mix-up: 7300TSH2OO6, should be 00 not OO

Non-Standard Polling Station numbering: Ward 19
Non-Standard Polling Station numbering: Ward 21
Non-Standard Polling Station numbering: Ward 22

Page 351

Non-Standard Polling Station numbering: Ward 2
Non-Standard Polling Station numbering: Ward 4
Non-Standard Polling Station numbering: Ward 5
Non-Standard Polling Station numbering: Ward 6

Page 352

Invalid Polling Station Code: 68400UMG1212
Invalid Polling Station Code: 8400UMG12013

Non-Standard Polling Station numbering: Ward 9
Non-Standard Polling Station numbering: Ward 12
Non-Standard Polling Station numbering: Ward 13
Non-Standard Polling Station numbering: Ward 14
Non-Standard Polling Station numbering: Ward 15
Non-Standard Polling Station numbering: Ward 16

Page 353

Non-Standard Polling Station numbering: Ward 17
Non-Standard Polling Station numbering: Ward 18
Non-Standard Polling Station numbering: Ward 19

Illegal Ward: On page 354, ZEC sets the minimum ward voter population size for Victoria Falls Municipality to be 1,600 voters. However, on the same page, Ward 3 has a population of 1,593 which is below the acceptable threshold. The ward size will need to be revised upwards

Illegal Ward: On page 354, ZEC also sets the maximum ward voter population size for Victoria Falls Municipality to be 2,400 voters. However, on the same page, Ward 4 has a population of 2,416 which is above the acceptable threshold. The ward size will need to be revised downwards.

Invalid Polling Station Code: 790VIC0104

Non-Standard Polling Station numbering: Ward 1

Invalid Polling Station Code: 790VIC0104

Invalid Polling Station Code: 790VIC0403

Invalid Polling Station Code: 790VIC0404

Invalid Polling Station Code: 790VIC0405

Non-Standard Polling Station numbering: Ward 11

Incorrect Voter Population: Hwange East constituency encompasses 6 illegal wards Hwange RDC Wards 8, 11, 12, 17, 18, 19 whose populations are either below {8, 12, 18, 19} or above {11, 17} the accepted 20% threshold. The total voter population for the entire Hwange East constituency is, therefore, incorrect and needs to be revised accordingly.

Incorrect Voter Population: Hwange West constituency has two illegal wards Victoria Falls Municipality Wards 3 and 4 whose population is below and above the accepted 20% threshold respectively. These two wards in this table will need to be revised accordingly. The corresponding constituencies where these wards are will also need to have their totals revised.

Incorrect Voter Population: The total voter population for Hwange West constituency is incorrect as this includes two illegal Victoria Falls Municipality Wards 3 and 4. This total will need to be revised.

Incorrect Voter Population: Hwange West constituency also has an illegal ward Hwange RDC Ward 2 whose population is above the accepted 20% threshold. The total voter population for Hwange West constituency is, therefore, incorrect and needs to be revised.

Missing Wards: ZEC states that Lupane East constituency is comprised of Wards 6, 7, 10, 11, 12, 16, 17, 18, 19, 20, 21, 22, 23, 25 and 28 from Kusile Rural District Council, as well as wards 17 and 18 from Bubi Rural District Council. However, in the table below the text, no ward from Bubi Rural District Council is listed. The last Kusile Wards 17 and 18 may be the Bubi wards.

- Non-Standard Polling Station numbering: Ward 2
- Non-Standard Polling Station numbering: Ward 3
- Non-Standard Polling Station numbering: Ward 4
- Non-Standard Polling Station numbering: Ward 5
- Non-Standard Polling Station numbering: Ward 6
- Non-Standard Polling Station numbering: Ward 7

- Non-Standard Polling Station numbering: Ward 9
- Non-Standard Polling Station numbering: Ward 10
- Non-Standard Polling Station numbering: Ward 11
- Non-Standard Polling Station numbering: Ward 12
- Non-Standard Polling Station numbering: Ward 14
- Non-Standard Polling Station numbering: Ward 15

Illegal Ward: On page 368, ZEC sets the maximum ward voter population size for Beitbridge Town Council to be 4,187 voters. However, on the same page,

Ward 5 has a population of 4,323 which is above the acceptable threshold. The ward size will need to be reduced.

Page 369

Illegal Ward: Beitbridge Town Council Ward 5

Non-Standard Polling Station numbering: Ward 6

Page 371

Invalid Polling Station Code: 5600BLM403

Invalid Polling Station Code: 5600BLM801

Invalid Polling Station Code: 5600BLM804

Non-Standard Polling Station numbering: Ward 1

Non-Standard Polling Station numbering: Ward 2

Non-Standard Polling Station numbering: Ward 3

Non-Standard Polling Station numbering: Ward 4

Non-Standard Polling Station numbering: Ward 5

Non-Standard Polling Station numbering: Ward 6

Non-Standard Polling Station numbering: Ward 7

Non-Standard Polling Station numbering: Ward 9

Page 372

Invalid Polling Station Code: 5600BLM04

Non-Standard Polling Station numbering: Ward 10

Non-Standard Polling Station numbering: Ward 11

Non-Standard Polling Station numbering: Ward 12

Non-Standard Polling Station numbering: Ward 13

Non-Standard Polling Station numbering: Ward 15

Page 373

Invalid Local Authority Abbreviation: 5600**BML**2002

Invalid Local Authority Abbreviation: 5600**BML**2003

Non-Standard Polling Station numbering: Ward 19

Page 374

Illegal Ward: On page 374, ZEC sets the minimum ward voter population size for Gwanda Rural District Council to be 1,585 voters. However, on the same page, Ward 20 has a population of 1,524 which is below the acceptable threshold. The ward size will need to be increased

Page 375

Invalid Polling Station Code: 2800GWA010

Non-Standard Polling Station numbering: Ward 4

Non-Standard Polling Station numbering: Ward 5

Non-Standard Polling Station numbering: Ward 8

Page 376

Non-Standard Polling Station numbering: Ward 10

Non-Standard Polling Station numbering: Ward 13

Non-Standard Polling Station numbering: Ward 14

Page 377

Illegal Ward: Gwanda Rural District Council Ward 20

Non-Standard Polling Station numbering: Ward 20

Non-Standard Polling Station numbering: Ward 21

Non-Standard Polling Station numbering: Ward 22

Non-Standard Polling Station numbering: Ward 23

Page 378

Non-Standard Polling Station numbering: Ward 2

Invalid Polling Station Code: 2801GWM050B
Invalid Polling Station Code: 2801GWM01004

Missing Sub-station: ZEC mentions 2801GWM0502A, but not B, C etc.
Missing Sub-station: ZEC mentions 2801GWM0602A, but not B, C etc.

Non-Standard Polling Station numbering: Ward 5
Non-Standard Polling Station numbering: Ward 8
Non-Standard Polling Station numbering: Ward 9
Non-Standard Polling Station numbering: Ward 10

Invalid Local Authority Abbreviation: 2100NIZ0502
Invalid Local Authority Abbreviation: 2100NIZ0503
Invalid Local Authority Abbreviation: 2100NIZ0504
Invalid Local Authority Abbreviation: 2100NIZ0505
Invalid Local Authority Abbreviation: 2100NIZ0506

Invalid Local Authority Abbreviation: 2100NIZ0801
Invalid Local Authority Abbreviation: 2100NIZ0802
Invalid Local Authority Abbreviation: 2100NIZ0803
Invalid Local Authority Abbreviation: 2100NIZ0804
Invalid Local Authority Abbreviation: 2100NIZ0805
Invalid Local Authority Abbreviation: 2100NIZ0806

Non-Standard Polling Station numbering: Ward 3
Non-Standard Polling Station numbering: Ward 5
Non-Standard Polling Station numbering: Ward 6
Non-Standard Polling Station numbering: Ward 7
Non-Standard Polling Station numbering: Ward 9

Non-Standard Polling Station numbering: Ward 11
Non-Standard Polling Station numbering: Ward 12
Non-Standard Polling Station numbering: Ward 14

Non-Standard Polling Station numbering: Ward 15
Non-Standard Polling Station numbering: Ward 17
Non-Standard Polling Station numbering: Ward 19

Page 383

Invalid Local Authority Abbreviation: 2100NIZ2002
Invalid Local Authority Abbreviation: 2100NIZ2003
Invalid Local Authority Abbreviation: 2100NIZ2008
Invalid Local Authority Abbreviation: 2100NIZ2103
Invalid Local Authority Abbreviation: 2100NIZ2104
Invalid Local Authority Abbreviation: 2100NIZ2105
Invalid Local Authority Abbreviation: 2100NIZ2106
Invalid Local Authority Abbreviation: 2100NIZ2201
Invalid Local Authority Abbreviation: 2100NIZ2203
Invalid Local Authority Abbreviation: 2100NIZ2205
Invalid Local Authority Abbreviation: 2100NIZ2206
Invalid Local Authority Abbreviation: 2100NIZ2301
Invalid Local Authority Abbreviation: 2100NIZ2302
Invalid Local Authority Abbreviation: 2100NIZ2303
Invalid Local Authority Abbreviation: 2100NIZ2304

Non-Standard Polling Station numbering: Ward 20
Non-Standard Polling Station numbering: Ward 21
Non-Standard Polling Station numbering: Ward 22

Page 384

Non-Standard Polling Station numbering: Ward 1

Page 385

Non-Standard Polling Station numbering: Ward 2
Non-Standard Polling Station numbering: Ward 4
Non-Standard Polling Station numbering: Ward 6

Page 386

Polling Station in Wrong Ward: 5600MAN1504, Ward 15 P/S in Ward 16

Non-Standard Polling Station numbering: Ward 16
Non-Standard Polling Station numbering: Ward 17

Page 388

Non-Standard Polling Station numbering: Ward 2

Page 389

Duplicate Polling Station: 3900MTB1101
Duplicate Polling Station: 3900MTB1501

Non-Standard Polling Station numbering: Ward 11
Non-Standard Polling Station numbering: Ward 15

Page 390

Invalid Polling Station Code: **39002403**

Page 391

Non-Standard Polling Station numbering: Ward 1
Non-Standard Polling Station numbering: Ward 3

Page 393

Voter Population Discrepancy: ZEC states that the ward voter population for Umzingwane RDC Ward 11 is 1,095. However, from page 395 and 404, there is a different population of 1,096. Either of these two totals is incorrect, and both should be looked into and rectified.

Page 394

Invalid Polling Station Code: 1900UMZN**705**

Page 395

Voter Population Discrepancy: ZEC states that the ward voter population for Umzingwane RDC Ward 11 is 1,096. However, from page 393, there is a different population of 1,095.

Page 397

Voter Population Discrepancy: On the National Assembly constituency list for Matabeleland South province, ZEC states that the voter population for Umzingwane is 22,292 voters, but on page 404 of the delimitation report, adding the ward totals gives a different total of 22,293 voters.

Page 398

Illegal Ward: Beitbridge West constituency has an illegal ward, that is, Beitbridge Town Council Ward 5 whose population is above the accepted 20% threshold. The voter population for Beitbridge West constituency is incorrect and will need to be revised.

Page 400

Illegal Ward: Gwanda South Constituency encompasses an illegal Gwanda Rural District Council Ward 20 whose population is below the accepted 20% threshold. This table and the constituency population must be revised upwards.

Page 403

Voter Population Discrepancy: ZEC states that the voter population for Umzingwane constituency is 22,292. However, immediately below, they state a different total of 22,293.

Page 404

Voter Population Discrepancy: ZEC gives the total voter population for Umzingwane constituency as 22,292. However, adding the individual wards gives a different total of 22,293.

Page 407

Non-Standard Polling Station numbering: Ward 2
Non-Standard Polling Station numbering: Ward 5
Non-Standard Polling Station numbering: Ward 6
Non-Standard Polling Station numbering: Ward 7
Non-Standard Polling Station numbering: Ward 9
Non-Standard Polling Station numbering: Ward 11

Page 408

Non-Standard Polling Station numbering: Ward 13

Page 409

Non-Standard Polling Station numbering: Ward 25

Page 410

Non-Standard Polling Station numbering: Ward 28
Non-Standard Polling Station numbering: Ward 35

Page 412

Duplicate Polling Station: 2300GOS0103
Non-Standard Polling Station numbering: Ward 1
Non-Standard Polling Station numbering: Ward 4
Non-Standard Polling Station numbering: Ward 5

Page 413

Invalid Polling Station Code: 300GOS1102

Non-Standard Polling Station numbering: Ward 6
Non-Standard Polling Station numbering: Ward 8

Non-Standard Polling Station numbering: Ward 9
Non-Standard Polling Station numbering: Ward 10
Non-Standard Polling Station numbering: Ward 11
Non-Standard Polling Station numbering: Ward 13

Page 414

Invalid Polling Station Code: 300GOS1805
Invalid Polling Station Code: 300GOS1905

Non-Standard Polling Station numbering: Ward 15
Non-Standard Polling Station numbering: Ward 16
Non-Standard Polling Station numbering: Ward 18
Non-Standard Polling Station numbering: Ward 19
Non-Standard Polling Station numbering: Ward 21

Page 415

Duplicate Polling Station: 2300GOS2509

Invalid Polling Station Code: 2300GOS206
Invalid Polling Station Code: 2300GOS24010

Non-Standard Polling Station numbering: Ward 23
Non-Standard Polling Station numbering: Ward 24
Non-Standard Polling Station numbering: Ward 25
Non-Standard Polling Station numbering: Ward 27
Non-Standard Polling Station numbering: Ward 28

Page 416

Non-Standard Polling Station numbering: Ward 31
Non-Standard Polling Station numbering: Ward 32

Page 417

Non-Standard Polling Station numbering: Ward 3

Page 418

Non-Standard Polling Station numbering: Ward 5

Page 420

Non-Standard Polling Station numbering: Ward 2

Non-Standard Polling Station numbering: Ward 4

Non-Standard Polling Station numbering: Ward 6

Page 421

Non-Standard Polling Station numbering: Ward 8

Non-Standard Polling Station numbering: Ward 9

Non-Standard Polling Station numbering: Ward 10

Non-Standard Polling Station numbering: Ward 12

Page 422

Non-Standard Polling Station numbering: Ward 15

Non-Standard Polling Station numbering: Ward 17

Non-Standard Polling Station numbering: Ward 18

Page 424

Invalid Polling Station Code: **59801**KWE0603

Invalid Polling Station Code: **59801**KWE0703

Invalid Polling Station Code: **59801**KWE0803

Page 427

Non-Standard Polling Station numbering: Ward 2

Non-Standard Polling Station numbering: Ward 3

Non-Standard Polling Station numbering: Ward 4

Page 428

Invalid Polling Station Code: **00300**MBG0705

Non-Standard Polling Station numbering: Ward 5

Non-Standard Polling Station numbering: Ward 6

Non-Standard Polling Station numbering: Ward 13

Page 429

Invalid Polling Station Code: **03**MBG001807

Non-Standard Polling Station numbering: Ward 18

Non-Standard Polling Station numbering: Ward 19

Page 430

Non-Standard Polling Station numbering: Ward 23

Non-Standard Polling Station numbering: Ward 26

Page 431

Non-Standard Polling Station numbering: Ward 33

Non-Standard Polling Station numbering: Ward 35

Non-Standard Polling Station numbering: Ward 36

Page 433

Duplicate Polling Station: 5802RECM0503

Polling Station in Wrong Ward: 5802RECM0503, Ward 5 P/S in Ward 6

Page 435

Polling Station in Wrong Ward: 6700RDC0201, Ward 2 P/S in Ward 1

Polling Station in Wrong Ward: 6700RDC0202, Ward 2 P/S in Ward 1

Polling Station in Wrong Ward: 6700RDC0203, Ward 2 P/S in Ward 1
Polling Station in Wrong Ward: 6700RDC0204, Ward 2 P/S in Ward 1
Polling Station in Wrong Ward: 6700RDC0205, Ward 2 P/S in Ward 1
Polling Station in Wrong Ward: 6700RDC0206, Ward 2 P/S in Ward 1
Polling Station in Wrong Ward: 6700RDC0101, Ward 1 P/S in Ward 2
Polling Station in Wrong Ward: 6700RDC0103, Ward 1 P/S in Ward 2
Polling Station in Wrong Ward: 6700RDC0106, Ward 1 P/S in Ward 2
Polling Station in Wrong Ward: 6700RDC0107, Ward 1 P/S in Ward 2
Polling Station in Wrong Ward: 6700RDC0108, Ward 1 P/S in Ward 2

Non-Standard Polling Station numbering: Ward 2

Page 436

Non-Standard Polling Station numbering: Ward 14
Non-Standard Polling Station numbering: Ward 15
Non-Standard Polling Station numbering: Ward 17

Page 437

Non-Standard Polling Station numbering: Ward 18

Page 441

Voter Population Discrepancy: ZEC states that the voter population for Takawira RDC Ward 25 is 1,854 voters. However, on page 462, there is a different Ward 25 population of 1,812 voters

Non-Standard Polling Station numbering: Ward 6

Page 442

Duplicate Polling Station: 7700TAK0102
Duplicate Polling Station: 7700TAK1502

Polling Station in Wrong Ward: 7700TAK0102, Ward 1 P/S in Ward 8
Polling Station in Wrong Ward: 7700TAK1502, Ward 15 P/S in Ward 8

Non-Standard Polling Station numbering: Ward 8
Non-Standard Polling Station numbering: Ward 9
Non-Standard Polling Station numbering: Ward 11
Non-Standard Polling Station numbering: Ward 12
Non-Standard Polling Station numbering: Ward 16

Page 443

Non-Standard Polling Station numbering: Ward 19
Non-Standard Polling Station numbering: Ward 20

Page 444

Voter Population Discrepancy: On page 444, ZEC reports the total voter population for Tongogara Rural District Council to be 41,901. However, adding the individual ward populations results in a different population of 41,902.

Page 445

Invalid Polling Station Code: 6600TON0302t
Invalid Polling Station Code: 6600TON405

Alpha-Numeral Mix-up: 6600T0N0501, should be TON not T0N

Page 446

Invalid Polling Station Code: 600TON0902

Alpha-Numeral Mix-up: 6600TON0801, should be 0808 not O801

Page 449

Voter Population Discrepancy: ZEC states that the voter population for Vungu RDC Ward 4 is 2,476 voters. However, on page 474, there is a different Ward 4 population of 2,477 voters. This discrepancy ought to be rectified.

Voter Population Discrepancy: ZEC states that the voter population for Vungu RDC Ward 15 is 2,642 voters. However, on page 474, there is a different Ward 4 population of 2,643 voters.

Voter Population Discrepancy: ZEC states that the total voter population for Vungu Constituency 26,101 voters. However, upon adding the individual ward totals presented, there is a different total of 26,103 voters.

Page 450

Voter Population Discrepancy: ZEC states that the voter population for Vungu RDC Ward 4 is 2,476 voters. However, on page 474, there is a different Ward 4 population of 2,477 voters

Non-Standard Polling Station numbering: Ward 3

Non-Standard Polling Station numbering: Ward 6

Non-Standard Polling Station numbering: Ward 8

Page 451

Non-Standard Polling Station numbering: Ward 11

Non-Standard Polling Station numbering: Ward 15

Non-Standard Polling Station numbering: Ward 16

Page 452

Non-Standard Polling Station numbering: Ward 19

Page 454

Duplicate Polling Station: 5800ZRDC0106

Polling Station in Wrong Ward: 5800ZRDC0106, Ward 1 P/S in Ward 2

Polling Station in Wrong Ward: 5800ZRDC0107, Ward 1 P/S in Ward 2

Polling Station in Wrong Ward: 5800ZRDC0108, Ward 1 P/S in Ward 2

Page 455

Invalid Polling Station Code: 5800ZRDC05802A

Non-Standard Polling Station numbering: Ward 9

Page 456

Polling Station in Wrong Ward: 5800ZRDC~~18~~06, Ward 18 P/S in Ward 19
Non-Standard Polling Station numbering: Ward 14

Page 457

Duplicate Polling Station: 5800ZRDC2304

Polling Station in Wrong Ward: 5800ZRDC~~23~~04, Ward 23 P/S in Ward 24

Invalid Polling Station Code: 5800ZRDC02102

Invalid Polling Station Code: 5800ZRDC02103

Page 458

Duplicate Polling Station: 5800ZRDC2805

Page 461

Voter Population Discrepancy: On the National Assembly constituency list for the Midlands Province, ZEC states that the voter population for Chirumanzu is 22,732 voters, but when the individual ward populations are added, there is a totally different constituency total of 22,690 voters.

Voter Population Discrepancy: On the National Assembly constituency list for the Midlands Province, ZEC states that the voter population for Vungu constituency is 26,101 voters. However, upon adding the individual ward populations gives a totally different constituency total of 26,103 voters.

Page 462

Voter Population Discrepancy: ZEC states that the voter population for Chirumanzu Constituency is 22,732 voters. However, adding the individual ward populations gives a new constituency total of 22,690.

Page 463

Report-Map Discrepancy: In the report, ZEC declared that Chiwundura constituency is made up of 9 Vungu RDC wards {5, 9, 10, 11, 12, 13, 14, 16 and 18}. However, on the map, Ward 10 does not fall under Chiwundura.

Page 464

Report-Map Discrepancy: In the report, ZEC states that Gokwe Central constituency is made up of 6 wards {1, 2, 3, 4, 5 and 6} from Gokwe South Town Council and five more wards {15, 16, 19, 20 and 32} from Gokwe South Rural District Council. However, on the map, Ward 16 does not fall under Gokwe Central, but Gokwe Mapfungautsi constituency.

Page 465

Report-Map Discrepancy: In the report, ZEC states that Gokwe Kana constituency is made up of 8 Gokwe South RDC wards {1, 2, 3, 21, 26, 27, 29 and 30}. However, on the National Ward map, the Ward 3 in question does not fall under Gokwe Kana constituency, but Gokwe Sengwa constituency.

Page 467

Report-Map Discrepancy: In the report, ZEC states that Gokwe Sengwa constituency is made up of 7 Gokwe South RDC wards, that is, 4, 5, 6, 8, 18, 22 and 31. However, on the provided ward map, Ward 22 does not fall under Gokwe Sengwa constituency, but Gokwe Kana constituency.

Page 474

Voter Population Discrepancy: ZEC states that the voter population for Vungu Constituency is 26,101 voters. However, adding the individual ward populations gives a different constituency total of 26,103 voters.

*NB: Omitted pages have nominal or no issues
Gerrymandering and map anomalies are detailed in the unabridged technical report*

~ END ~